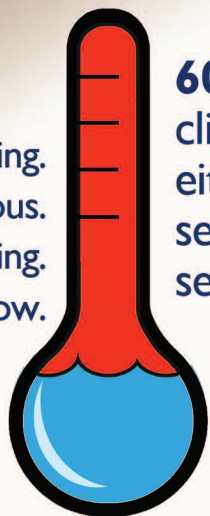


# Climate Change is Real and Will Affect Us All

**A December 2015 National Poll conducted by Monmouth University finds that:**

**22%** say it is not happening.  
**9%** say it is not too serious.  
**8%** are not sure it's happening.  
**1%** don't know.



**60%** think that climate change is either a very serious or a serious problem.

**70%** think that the world's climate is undergoing a change that is causing more extreme weather patterns and the rise of sea levels.

**8%** don't know.

**22%** say climate change not happening.

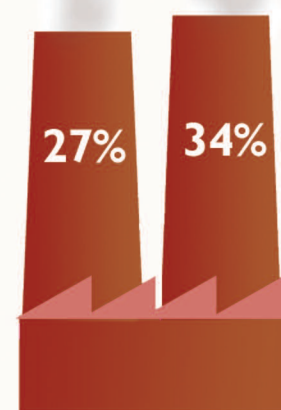
**55%** of Americans say sea level rise will have a great deal of impact or some impact on the environment – ranging from the weather to drinking water quality – in the area where they live.



**20%** say just a little impact.  
**21%** say no impact.



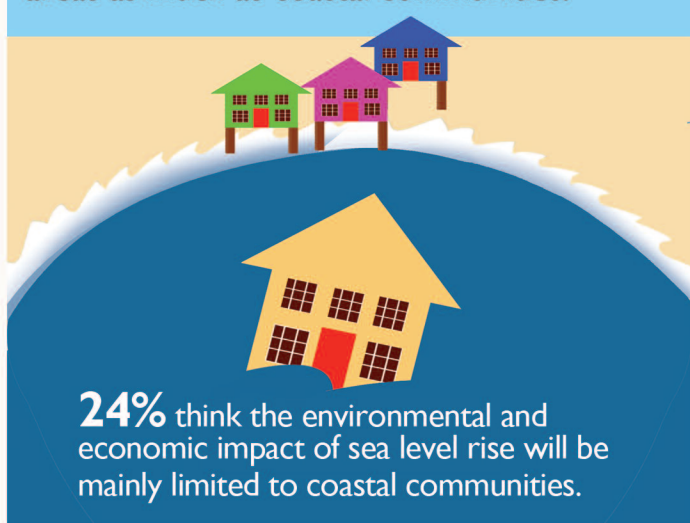
**27%** feel that climate change is caused mostly by human activity.



**34%** believe it is due to both human activities and natural changes.

**8%** feel it is caused by natural changes in the environment.

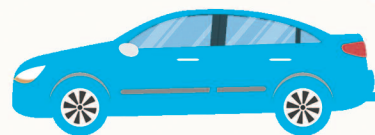
**62%** believe sea level rise will affect inland areas as much as coastal communities.



**24%** think the environmental and economic impact of sea level rise will be mainly limited to coastal communities.

**64%** support the United States government doing more to reduce the type of activities that cause climate change and sea level rise.

**6%** oppose government reducing activities that cause climate change and sea level rise.



## What We're Doing at New Jersey Sea Grant Consortium

- Improving the communication of flood risks to real estate markets along the shore
- Conducting research on how to protect people, property and nature along the Delaware
- Employing expertise of dedicated community resilience and climate adaptation specialist on staff
- Investigating status and trends of coastal wetlands for sea level rise planning
- Supporting planning and adaptation to reduce activities that cause climate change and sea-level rise

**For the complete poll visit [www.monmouth.edu/2015climatepoll](http://www.monmouth.edu/2015climatepoll)**