



# Hydrographic Mapping and Survey Capabilities

Monmouth University's Urban Coast Institute has developed capacity and a track record for conducting hydrographic survey projects throughout the region in coastal, inland waters, streams and lakes.

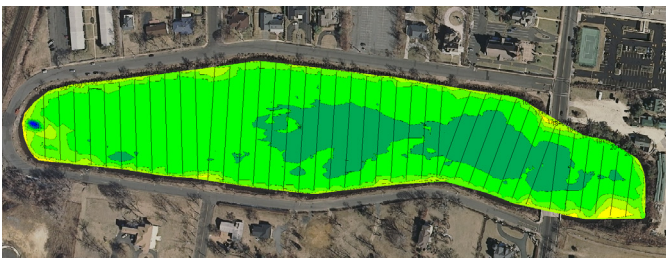
## Vessel Capabilities

- R/V Sea Hawk 27 foot fiberglass hulled survey vessel
- R/V Little Hawk 18 foot fiberglass hulled survey vessel
- Small Boats (2): Jon Boat 14' and Avon Inflatable 12'

## Mapping Capabilities

- Single Beam: Odom Dual Frequency 200/33 kHz
- Positioning: Trimble RTK GPS Base and Rover
- Side-Scan Sonar: Klein 3900 Dual Freq 455/900 kHz
- Data Collection and Processing: Hypack/Hysweep Sonar Pro, Sonar Wiz, Swathview and ArcGIS
- Tritech Starfish 990F 1 MHz
- ACSM Certified Hydrographer on staff
- Multibeam: SEA SWATH plus 488 kHz interferometric sonar

A hydrographic survey is the science of measuring and describing subsurface features, such as the shorelines and other submerged obstructions.



## Hydrographic Survey Projects

- Benthic Seabed Classification
- Channel Surveys and dredge volume calculations
- Lake Surveys
- Depth of Sediment
- Side scan search and recovery
- Debris mapping
- Single beam and Multibeam Surveys
- Flood elevation mapping
- Geolocated underwater video surveys