

# Standard Technology Onboarding Protocol

## Updating your Wi-Fi and Email Passwords on iOS 6 (iPad, iPad Mini, iPhone, iPod Touch)

### Updating your Wireless (MU-Secure) Password





If you recently changed your **Monmouth University password**, you will need to update the **password** within your **MU-Secure Wi-Fi** settings and **Email** settings (**steps 12 - 16**)...

1. Tap the **Settings** icon.

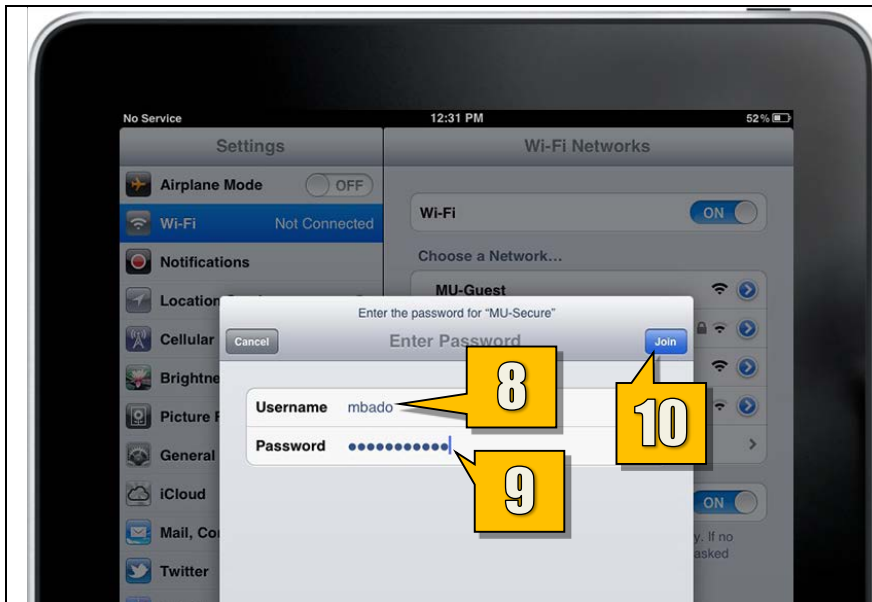
2. Tap on **Wi-Fi**.
3. Tap on  to the right of **MU-Secure**.



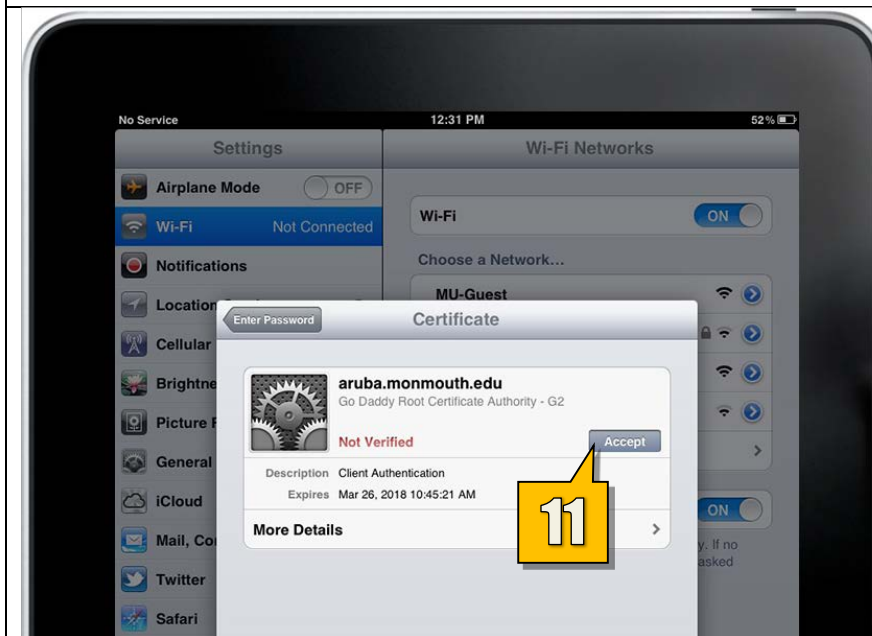
# Standard Technology Onboarding Protocol

|  |  |
|--|--|
|    | <p>4. Tap on <b>Forget this Network</b>.</p>                           |
|    | <p>5. Tap <b>Forget</b>.</p>   |
|   | <p>6. Tap <b>Wi-Fi Networks</b> to go back to the previous screen.</p> |
|  | <p>7. Tap <b>MU-Secure</b> to initiate the connection.</p>             |

## Standard Technology Onboarding Protocol



8. Type your **Monmouth University Username** or **Student ID**.
9. Type your new **password**.
10. Tap **Join**.



11. Tap **Accept** to accept the **security certificate**.

Your **MU-Secure Wi-Fi** connection is now updated with your new **password**.

# Standard Technology Onboarding Protocol

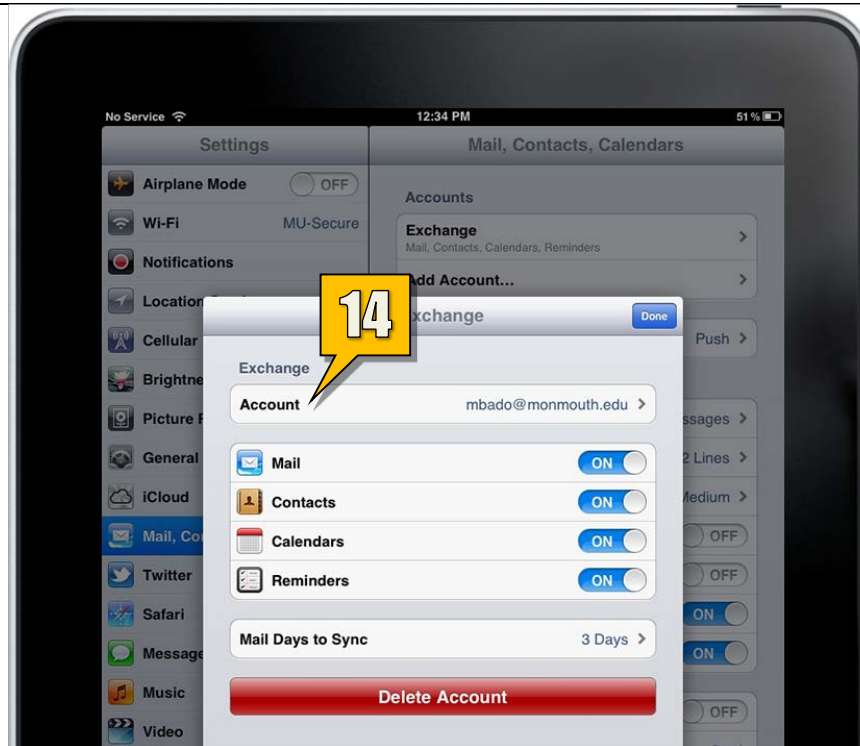
## Updating your Email Password

Once you change your **Monmouth University password**, you will need to manually change the **password** for your **Employee Email** or **Student Email** configuration on your **iOS** device.

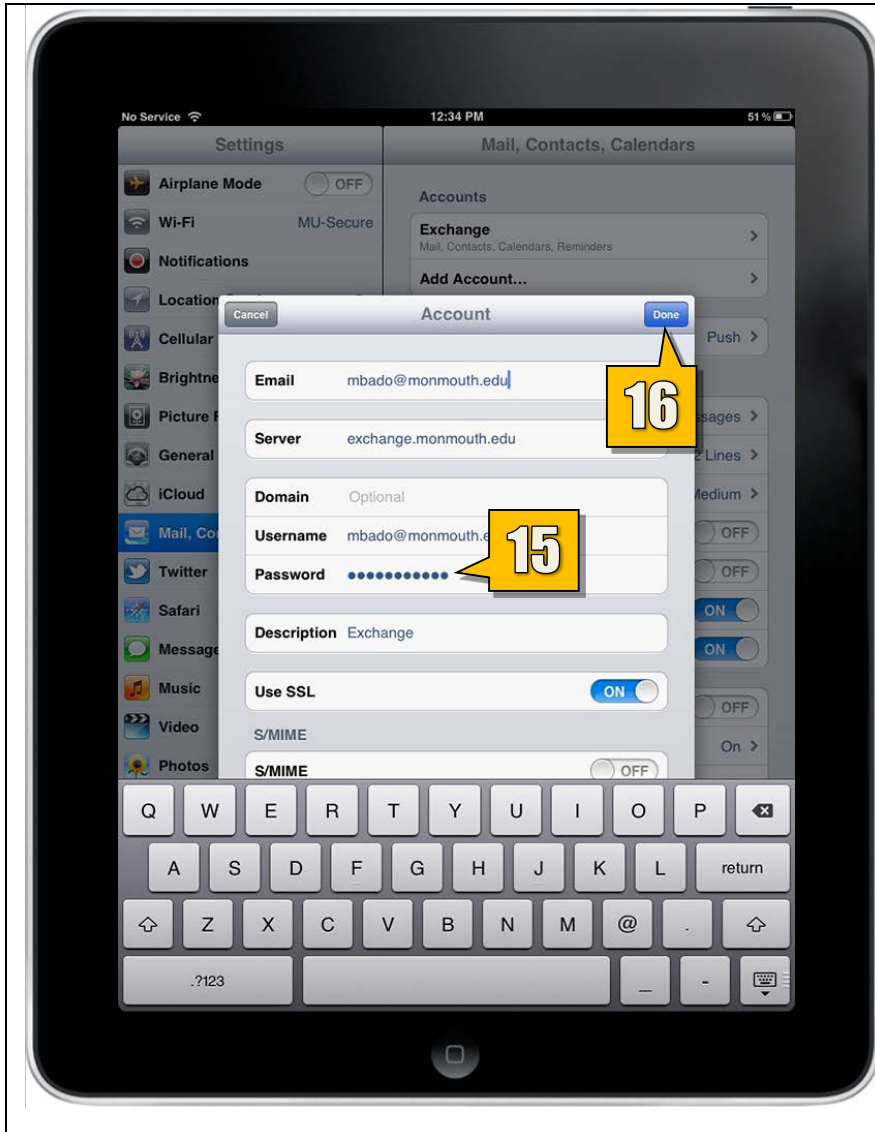
On the **Settings** screen...

12. Tap **Mail, Contacts, Calendars**.
13. Tap on your **Email** account (this is called **Exchange** by default).

14. Tap **Account**.



## Standard Technology Onboarding Protocol



15. Enter your new **password**.

16. Tap **Done**.

Your **Email** is now updated with your new **password**.