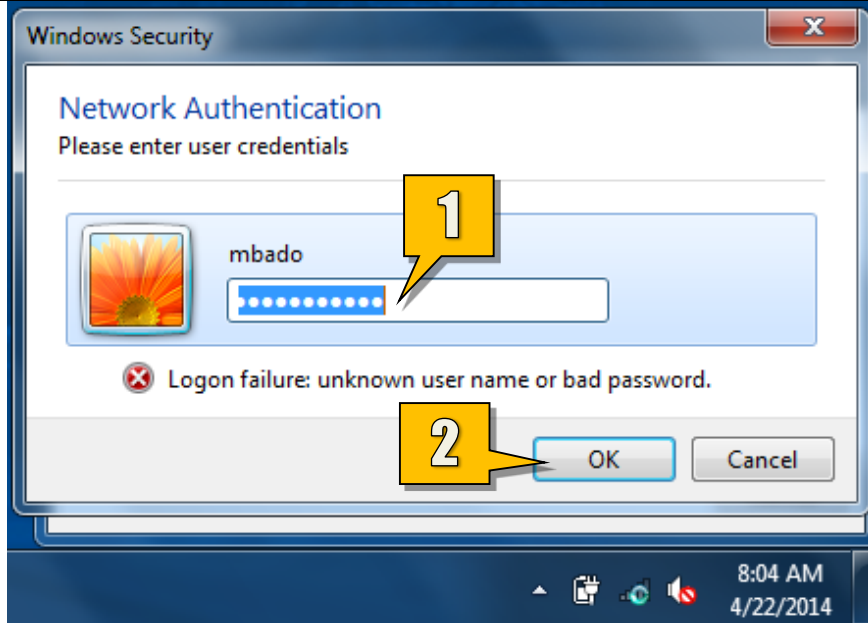


Standard Technology Onboarding Protocol

Updating your Wi-Fi (MU-Secure) and Email Passwords in Windows 7

Updating your Wireless (MU-Secure) Password

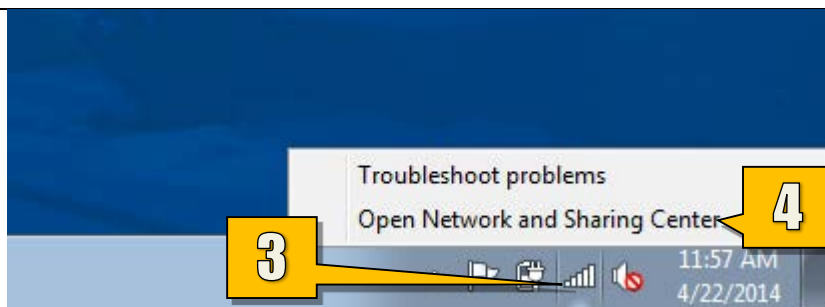


If your **PC** is connected to the **MU-Secure Wireless** network and has your **Monmouth University Email** set up in **Microsoft Outlook**, you will need to manually update their **passwords** after changing your **Monmouth University password**. Please follow **steps 1 – 13** to update your **Wireless Network (MU-Secure) password**. To update your **Email password**, please follow **steps 14 – 17**.

When your **Windows PC** attempts to connect to **MU-Secure** with your previously saved **credentials**, it will prompt you to type your new **password**...

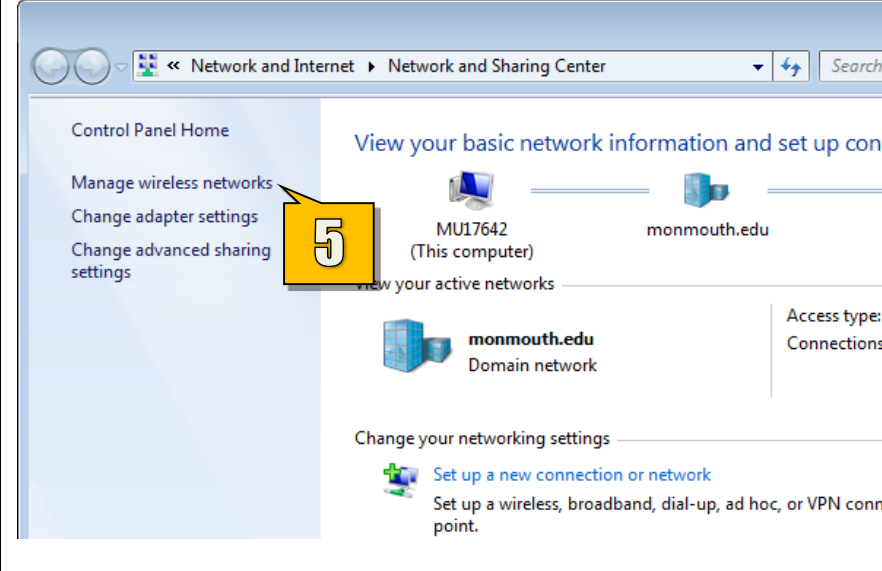

1. Type your new **password**.
2. Click **OK**.

Please note that it may take up to **24 hours** for the **automated prompt** asking you to input your new **credentials** to appear. If you would like to force the **password** update manually, please follow **steps 3 - 13**.

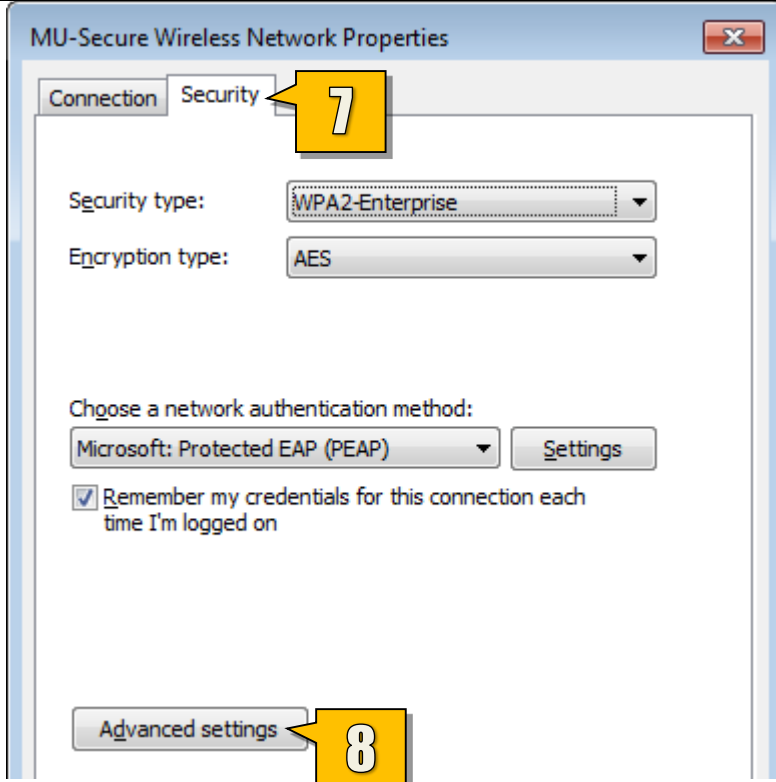


3. Right-click the **Wireless Network** icon.
4. Select **Open Network and Sharing Center**.

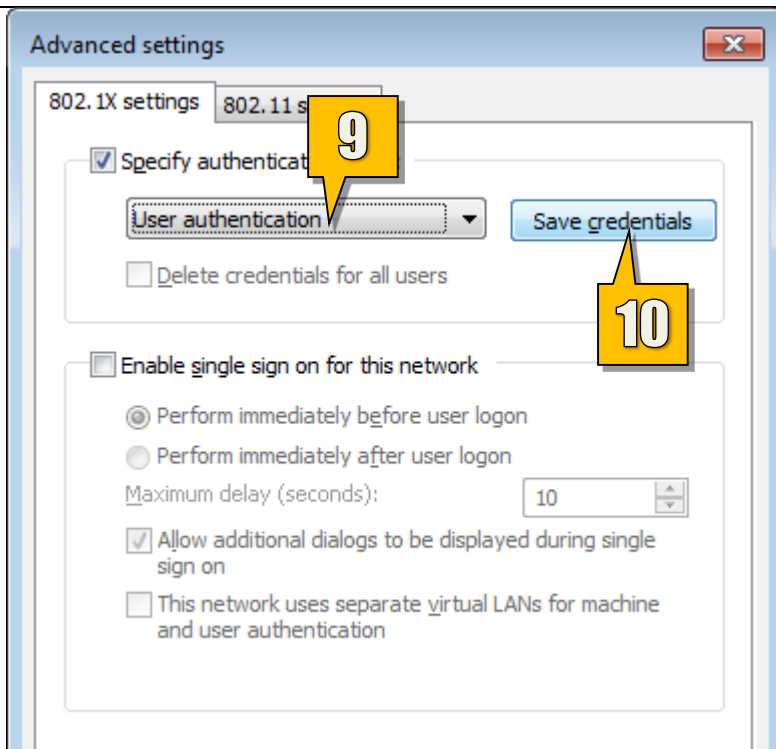
Standard Technology Onboarding Protocol

	<p>In the Network and Sharing Center window...</p> <p>5. Click on Manage wireless networks.</p>
	<p>On the Manage Wireless Networks window...</p> <p>6. Double-Click on Wireless Properties.</p>

Standard Technology Onboarding Protocol

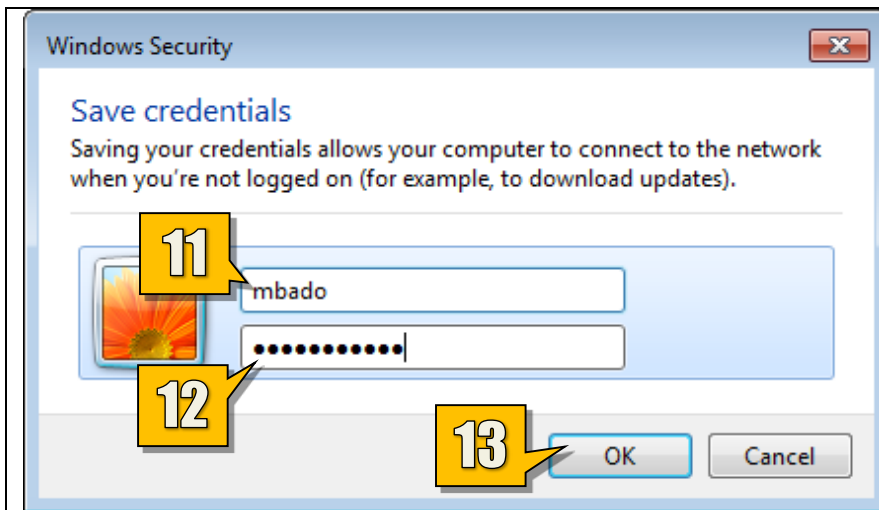


7. Click the **Security** tab.
8. Click **Advanced settings**.



9. Make sure **User authentication** is selected.
10. Click **Save credentials**.

Standard Technology Onboarding Protocol

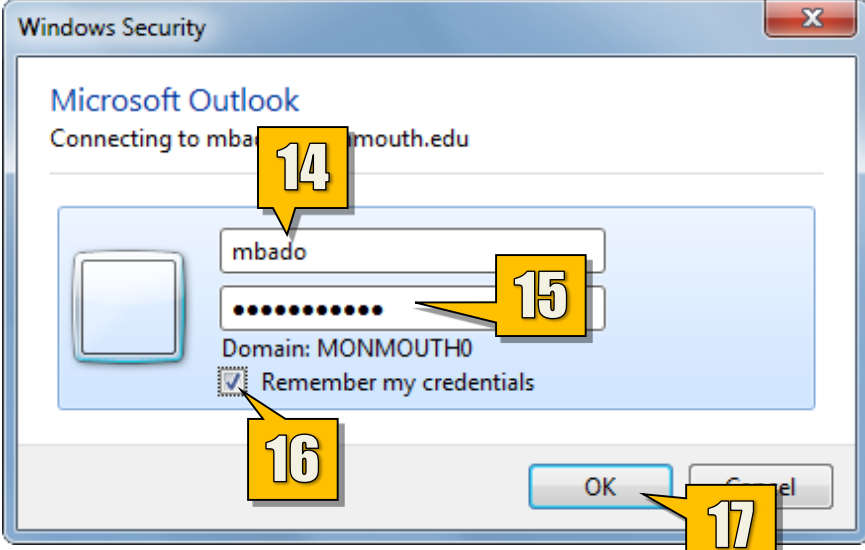


11. Type your **Monmouth University Username** or **Student ID**.
12. Type your new **password**.
13. Click **OK**.

You can now close all related windows by clicking **OK** or **Close**. Your **Wi-Fi** connection should reconnect automatically with the new credentials.

Standard Technology Onboarding Protocol

Updating your Email Password in Outlook 2010



Windows Security

Microsoft Outlook

Connecting to mbado@monmouth.edu

mbado

Domain: MONMOUTH0

☒ Remember my credentials

OK Cancel

Once you change your **Monmouth University password**, **Microsoft Outlook** will prompt you to enter your new **password** for your **Email** account...

14. Type your **Monmouth Username** or **Student ID**.
15. Type your new **password**.
16. Put a **check** next to **Remember my credentials**.
17. Click **OK**.