



Students are **NOT permitted** to use any device or product that extends the **HawkNET** network beyond the intended personal use.

These restrictions include, but are not limited to, the use of **personal routers, wireless routers, wireless access points, NAT devices**, or any other device that acts as a **router** (i.e. personal computer configured to bridge or share network connections). **These devices can cause unexpected network outages and disruptions in service. We appreciate your cooperation!**

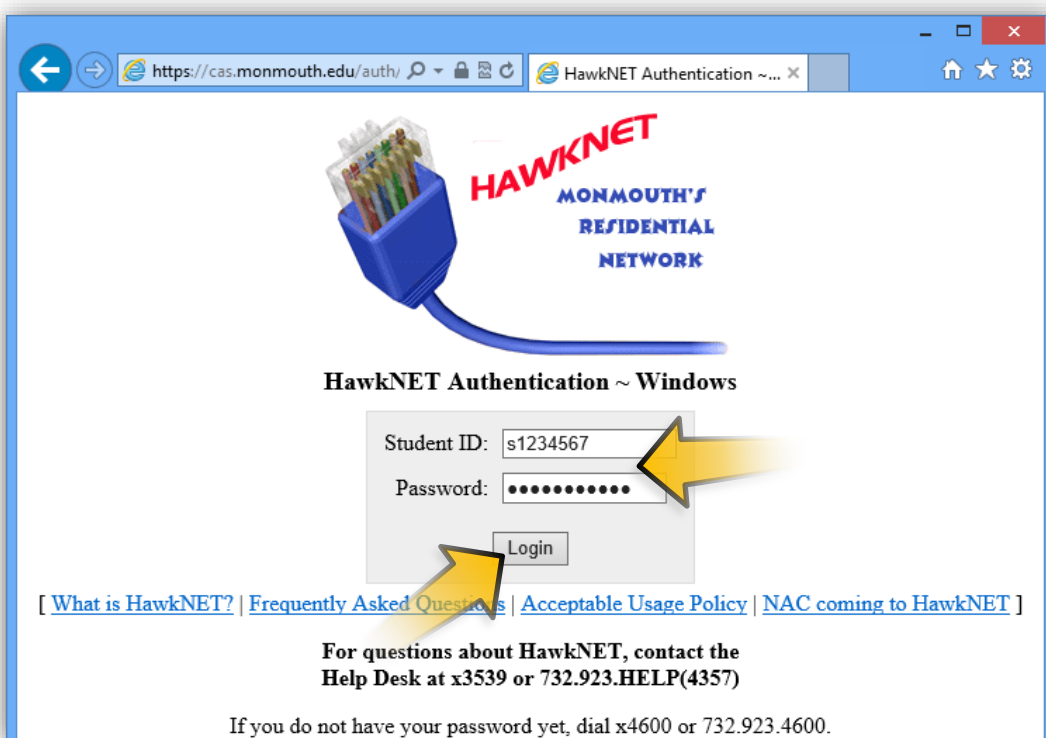
Part 1: Connecting to HawkNET on your Windows 8 PC

First, plug in your **Ethernet** cable into your **PC**. Plug the other end into the **BLUE** data port in your room. Your computer will automatically connect to the **Monmouth University** network. The **RED** port is for your phone.

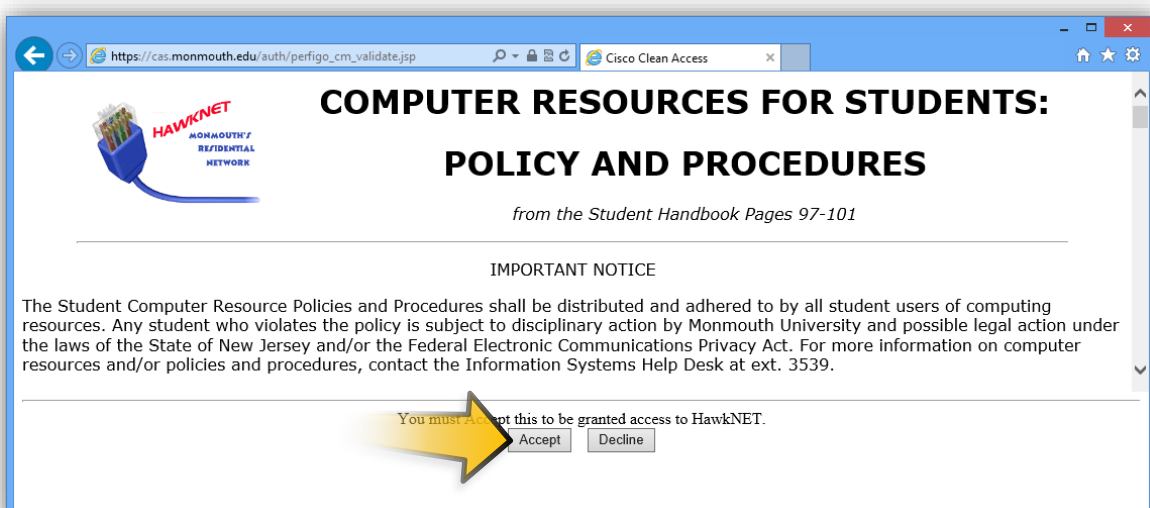


Next, open your **Web Browser** (**Internet Explorer, Firefox, Chrome, Safari**, etc...). You will be automatically redirected to our **HawkNET** login page. Enter your **Student ID Number** (i.e. **s1234567**) and your **Monmouth University Password** (same password as **Hawkmail, WebAdvisor, and eCampus**). Click **Login**.

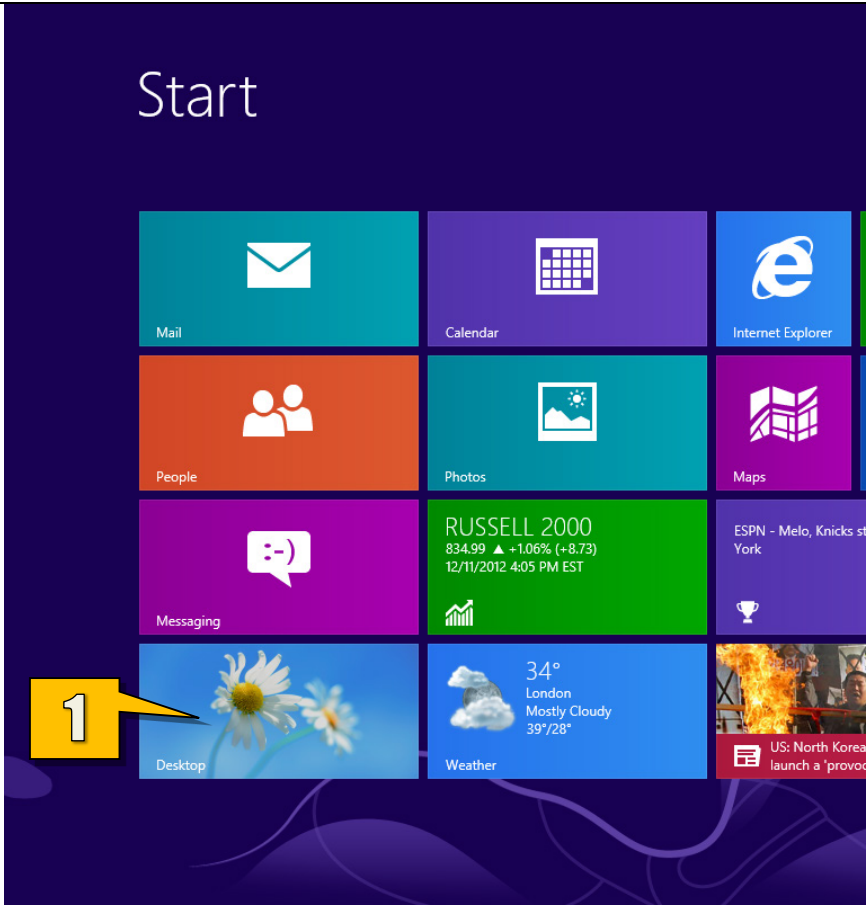
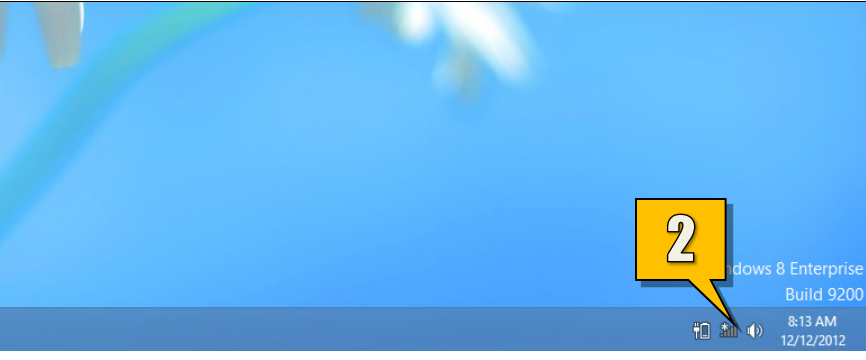
NOTE: If you did not receive your password yet, please call **732-923-4600**.

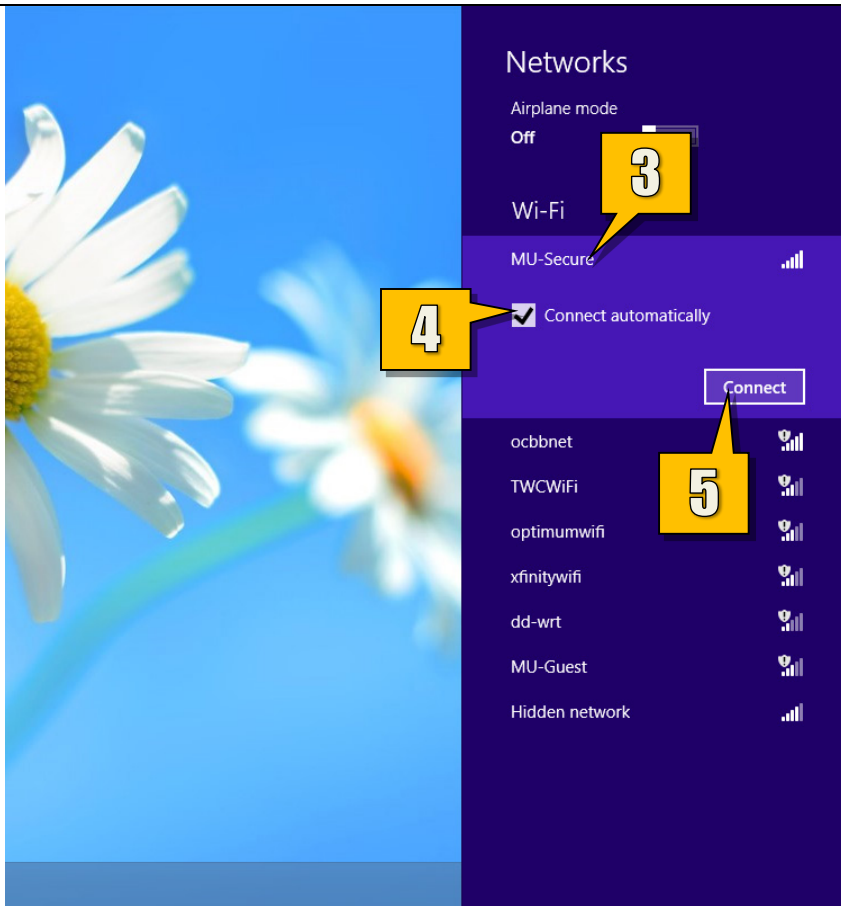


Click **Accept** to accept the **Policy and Procedures** agreement. You are now logged into **HawkNET**.

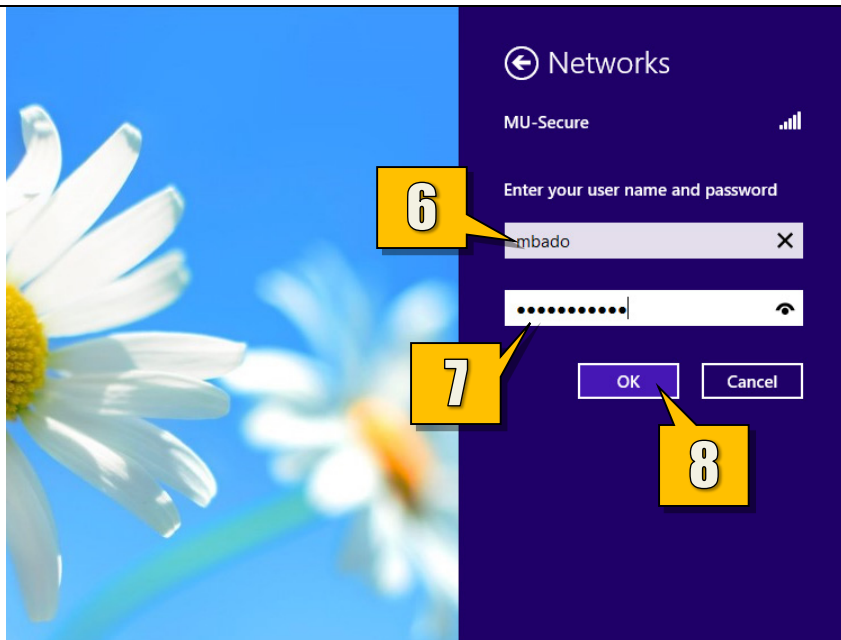


Part 2: Connecting to “MU-Secure” Wireless Network – Windows 8

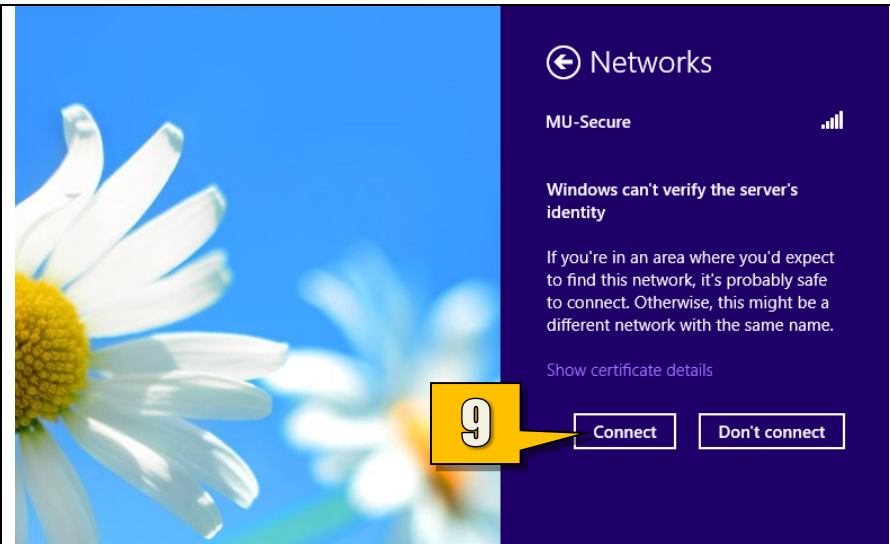
 <p>The image shows the Windows 8 Start screen. The word "Start" is at the top left. Below it are several live tiles: Mail, Calendar, Internet Explorer, People, Photos, Maps, Messaging, a stock market tile for RUSSELL 2000 (834.99, +1.06%, 12/11/2012 4:05 PM EST), an ESPN tile, a Weather tile for London (34°, Mostly Cloudy, 39°/28°), and a news tile about North Korea. A yellow callout box with the number "1" points to the Desktop tile, which features a daisy flower.</p>	<p>1. Click on the Desktop tile.</p>
 <p>The image shows the Windows 8 Desktop. The background is a blue sky with a blurred green object. In the bottom right corner, there is a taskbar with the date and time (8:13 AM, 12/12/2012) and system icons. A yellow callout box with the number "2" points to the Wireless Connections icon in the taskbar. The system tray also shows the text "Windows 8 Enterprise Build 9200".</p>	<p>2. From the Desktop, in the lower-right corner of the screen next to the time and date, click on the Wireless Connections icon.</p> <p>This will slide out the Networks pane.</p>



3. From the **Networks** pane, click on **MU-Secure** under the **Wi-Fi** selections.
4. Put a **check** in the **Connect automatically** checkbox.
5. Click **Connect**.

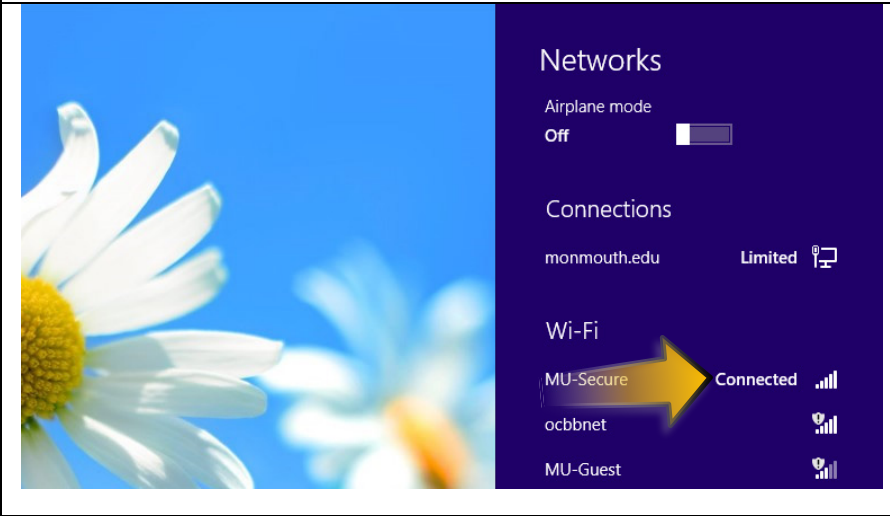


6. Type in your **Monmouth University username** (leave out the **hawkdom2** or **monmouth0** domain).
7. Type in your **Monmouth University password**.
8. Click **OK**.



You will see a warning stating that “**Windows can't verify the server's identity.**”

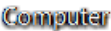
9. Click **Connect** to proceed.



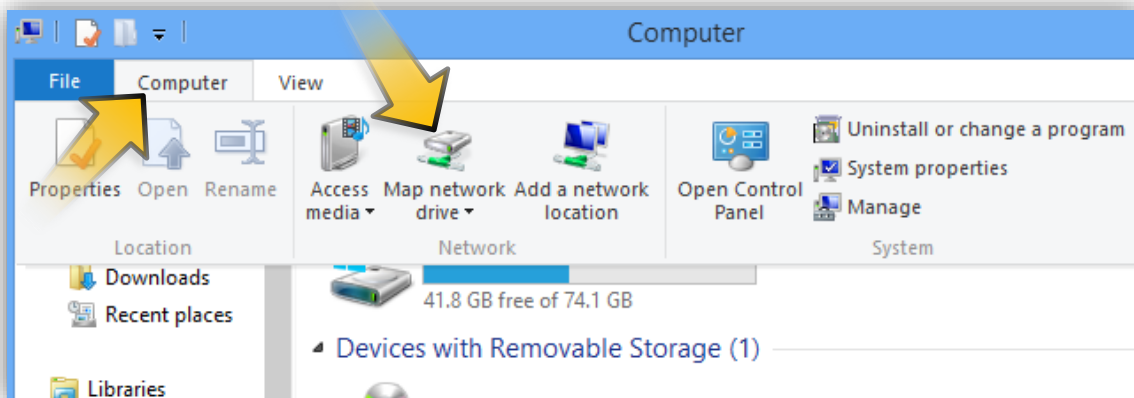
You are now connected to the **MU-Secure Wireless Network.**

Part 3: Connecting to your Student Network Drive (M: Drive)

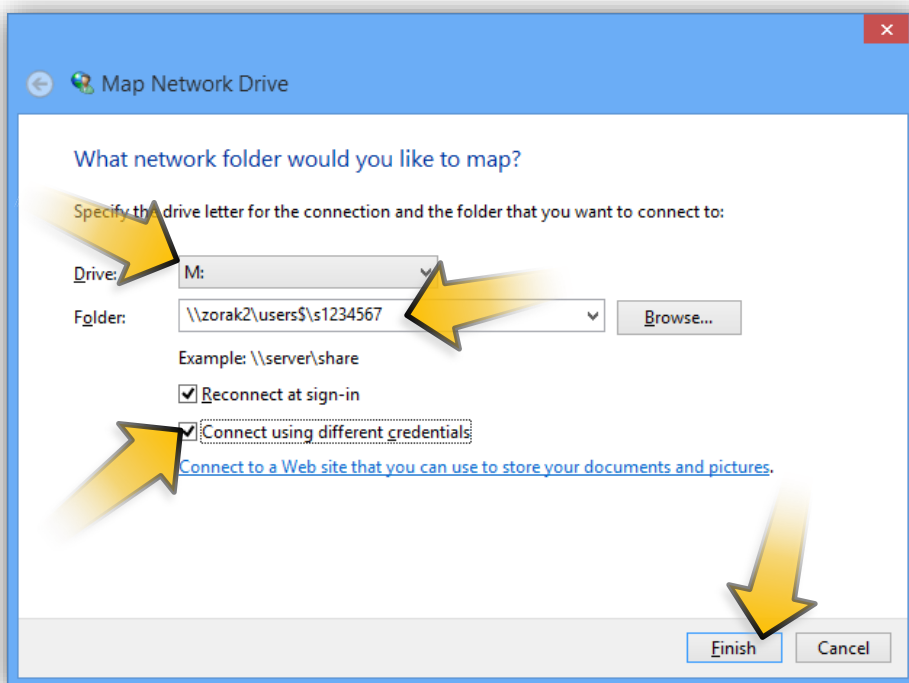
Double-click  on your Desktop or navigate to it from the Start screen.



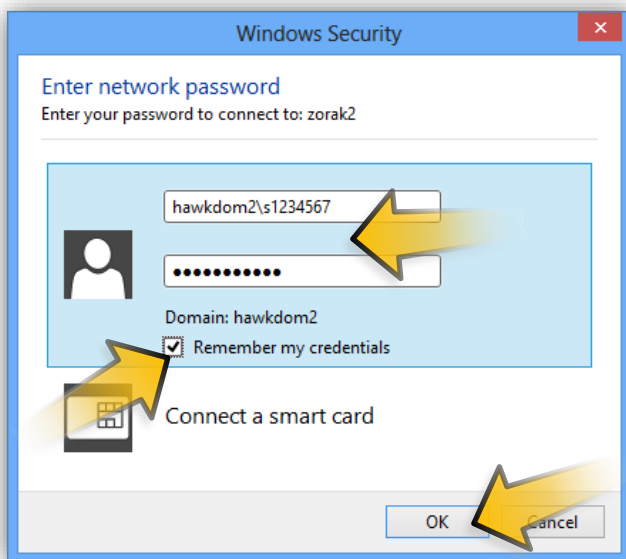
Click on the **Computer** tab and then click on **Map network drive**.



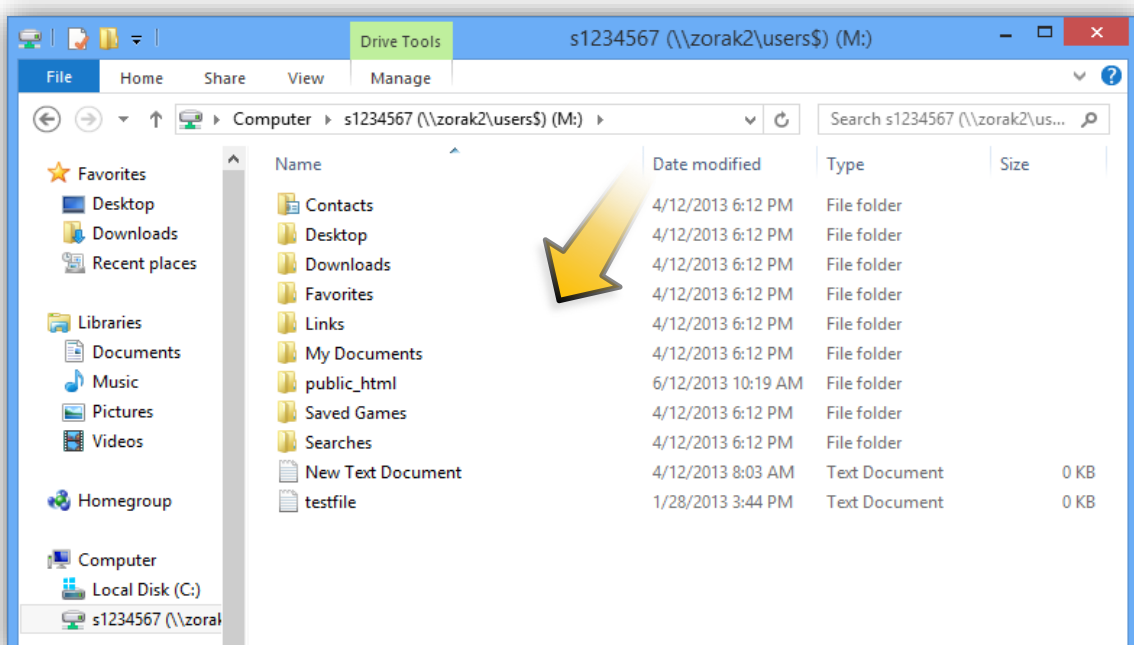
Select **M:** from the **Drive** dropdown menu. Type `\\zorak2\users$\YOUR_STUDENT_ID` (with the “s” in front) in the **Folder** field. Make sure **Connect using different credentials** is checked. Click **Finish**.



When you are prompted to enter your credentials, type `hawkdom2\YOUR_STUDENT_ID` (with the “s”) in the **User name** field. Type your standard **Monmouth University** password in the **Password** field. Place a **checkmark** next to **Remember my credentials**. Click **OK**.



You now have access to your **Student Network Drive (M: Drive)**.

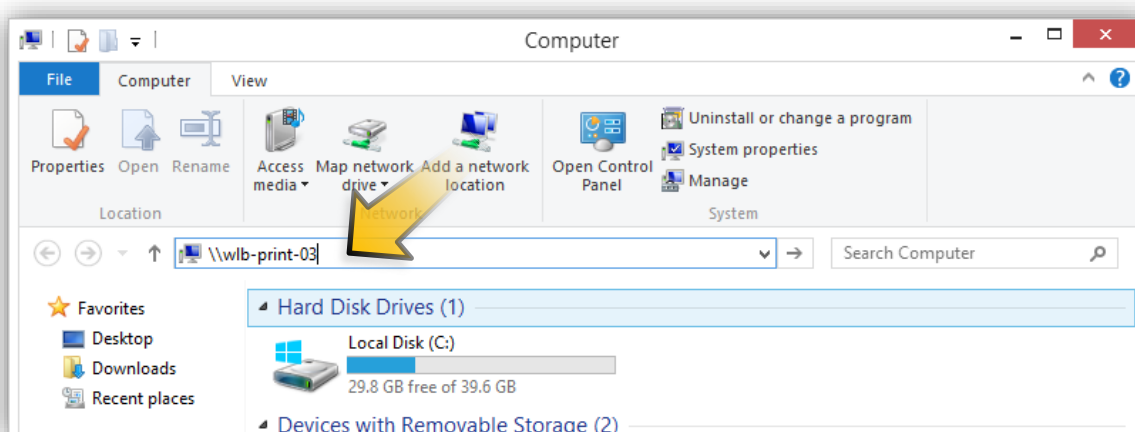


Part 4: Installing a Lab Printer on a Windows 8 PC

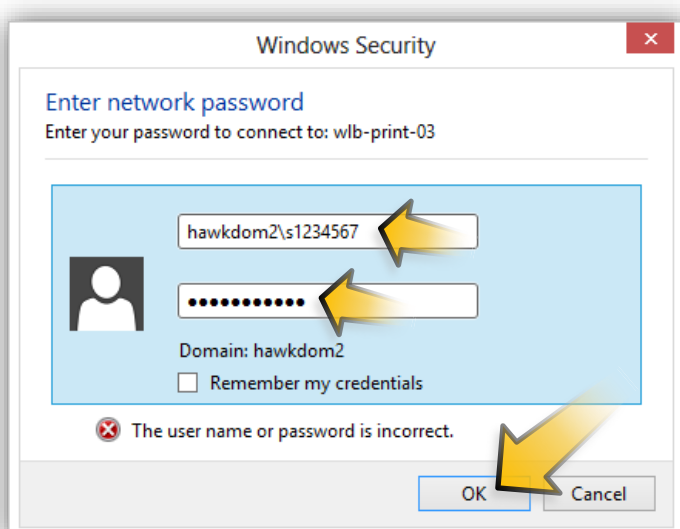
You must be connected to the **Monmouth University network** in order to install and print from a **Lab Printer**. If you are connecting **wirelessly**, make sure you are connected to the **MU-Secure wireless network**.

Double-click **Computer**  on your **Desktop**.

Type **\\wlb-print-03** into the address bar in the Explorer window that opens. Press **Enter**. If that address does not resolve correctly, try typing **\\wlb-print-03.monmouth.edu**.

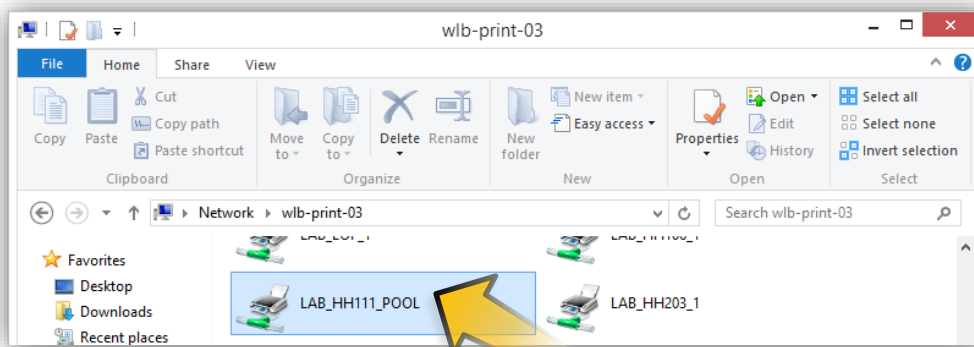


You will be prompted to log in. Type **hawkdom2\YOUR_STUDENT_ID** (e.g. **hawkdom2\s1234567**) into the **User name** field, and your **Domain password** into the **Password** field. Click **OK**.

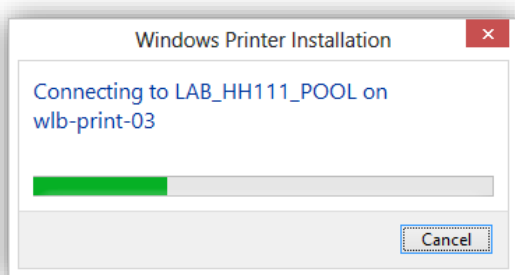


An **explorer** window will open to the **wlb-print-03** location. From here, find the printer you are looking for and **double-click** it. You may be prompted for your **Monmouth University credentials** again.

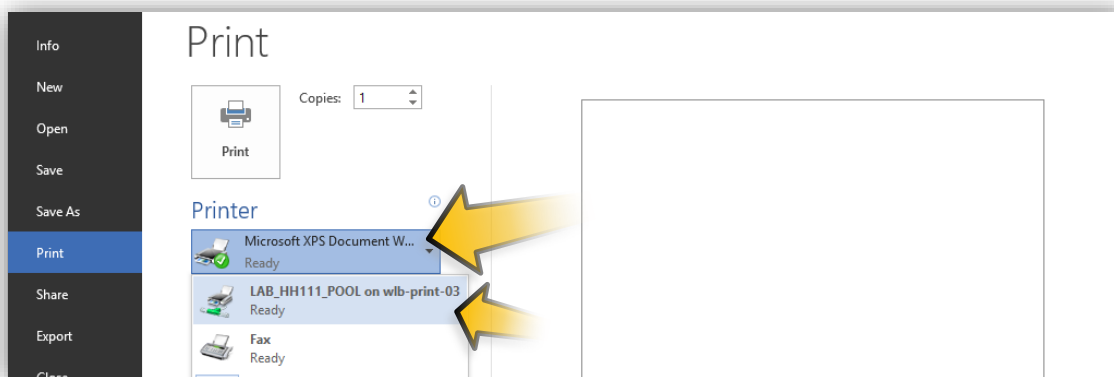
NOTE: All **Lab** and **Classroom** printers will be designated with **LAB** in front of the rest of their name.



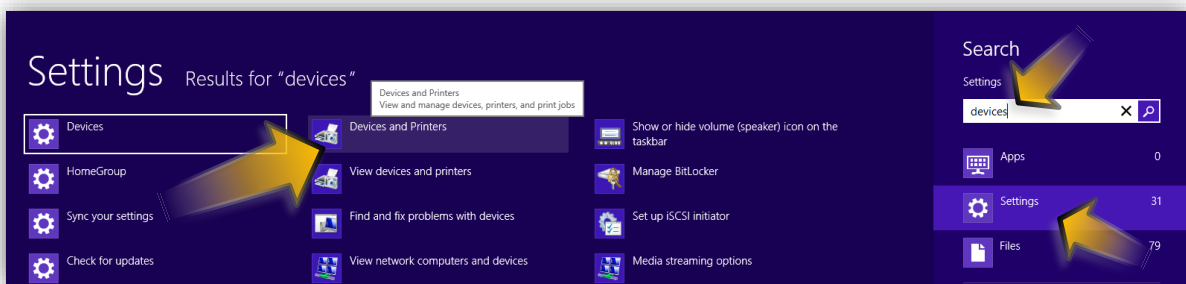
You will begin to install the appropriate **printer driver**. Please note that not all printers will be **compatible** with your **PC**. If the installation **fails**, the printer **driver** may be incompatible with your **PC's configuration** so please try to connect to a **different** printer.



When you go to print a document, make sure to **select** the printer you just added from the **Printer dropdown menu**.



Alternatively, if you wish to make the **Lab Printer** your **default**, you can do so as well. Go to the **Start screen** and type **devices**. Select the **Settings** search criteria and chose **Devices and Printers**.



From the **Devices and Settings** window, find the **Lab Printer** that you just added, **right-click** it, and select **Set as default printer**.

