



Please attribute this information to:
Monmouth University Poll

West Long Branch, NJ 07764
www.monmouth.edu/polling
Follow @MonmouthPoll

Released:
Monday, May 6, 2024

Contact:
PATRICK MURRAY
pdmurray@monmouth.edu
Follow @PollsterPatrick

NATIONAL: CLIMATE CHANGE CONCERNS DIP

Younger adults express less urgency than in prior polls

West Long Branch, NJ – Most Americans continue to acknowledge the existence of climate change, according to the latest *Monmouth (“Mon-muth”) University Poll*, but the number who see this as a very serious problem has fallen below half. Support for government action to reduce activities that impact the climate has dipped below 6 in 10 for the first time since Monmouth began polling this topic nearly a decade ago. The poll finds that the drop in the importance and urgency of climate change has been most pronounced among younger adults.

Nearly 3 in 4 Americans (73%) believe the world’s climate is undergoing a change leading to more extreme weather patterns and sea level rise, while 23% say this is not happening. Belief in climate change is down slightly from polls taken in 2021 (76%) and 2018 (78%), but is still nominally higher than it was in 2015 (70%). Nearly all Democrats (92%) believe climate change is happening, which has been fairly consistent across prior polls (94% in 2021, 92% in 2018, and 85% in 2015). Republicans (51%) are the least likely to accept climate change as a reality, which is similar to GOP opinion in 2021 (48%) and 2015 (49%), but down from a momentary jump recorded in 2018 (64%). [Note: the 2018 poll was conducted shortly before then-President Donald Trump disparaged a new federal climate report.] Most independents (71%) believe climate change is happening, but this is down from 81% who said the same in 2021, as well as 78% in 2018 and 74% in 2015.

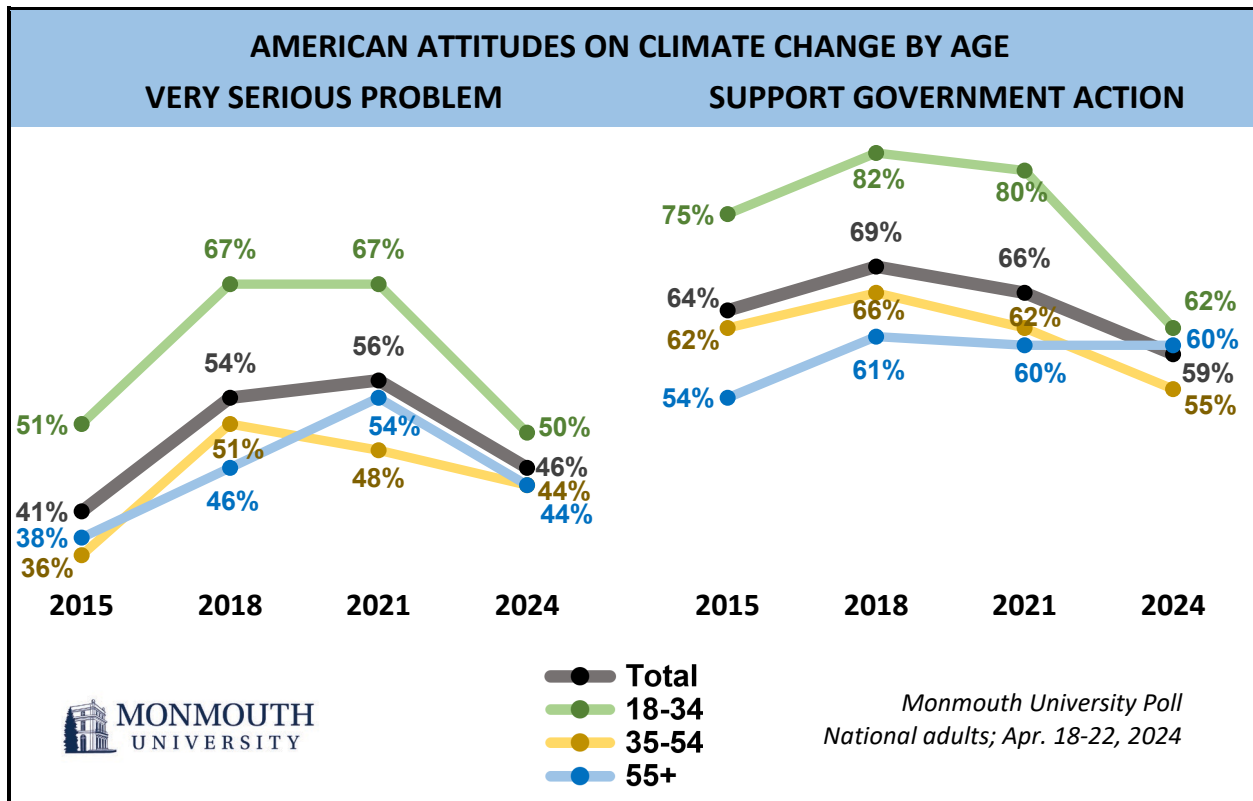
“Most Americans continue to believe climate change is real. The difference in these latest poll results is a decline in a sense of urgency around this issue,” said Patrick Murray, director of the independent Monmouth University Polling Institute. A Monmouth [poll released last month](#) found only 15% of voters view climate change as a determinative issue in how they will vote in the 2024 presidential election, ranking far lower than inflation, immigration, and abortion.

Less than half (46%) of the American public sees climate change as a *very serious* problem. This number is higher than it was nine years ago (41% in 2015), but is decidedly lower than in more recent

polling (54% in 2018 and 56% in 2021). Compared to three years ago, climate change concern has declined by 8 percentage points among both Democrats (77% very serious, down from 85% in 2021) and Republicans (13%, from 21%) and by 13 points among independents (43%, from 56%).

There has also been a drop in support for government action on climate change. Just over half say it is either extremely important (29%) or very important (23%) for the federal government to address the issue. This is down from 6 in 10 who felt this way less than three years ago (33% extremely and 27% very important in September 2021). Currently, 59% support and 36% oppose the U.S. government doing more to reduce the type of activities that cause climate change and sea level rise. While a clear majority continue to support government action, this number is lower than past polling (66% in 2021, 69% in 2018, and 64% in 2015). Most Democrats (89%) support government action on climate change while few Republicans (30%) feel the same. These results are nearly identical to 2021. However, support among independents has dropped significantly over the past three years (55%, down from 67% in 2021).

“Support for climate action remains relatively high in absolute terms, but it has softened due to a drop in the sense of urgency on this issue, particularly among younger adults,” said Murray.



The percentage of Americans between the ages of 18 and 34 who see climate change as a very serious problem has fallen by 17 points in the past three years (50%, down from 67% in 2021), compared with smaller declines among those who are 35 to 54 years old (44%, down from 48%) and those age 55

and older (44%, down from 54%). Support for government action to reduce climate change activities stands at 62% among those age 18 to 34, which is similar to current support levels among older Americans (55% age 35 to 54 and 60% age 55 and older). However, support among younger adults has dropped significantly from prior polls (80% in 2021, 82% in 2018, and 75% in 2015), while it has remained fairly stable among Americans age 35 and older during the past decade.

In terms of pinpointing exactly when the shift in attitudes about climate change occurred, most of the questions included in the Monmouth poll have been asked every three years since 2015. However, the question on the importance of government action was added in early 2021 and has been asked multiple times since then. The findings on this question suggest the dip in climate concern occurred between late 2021 and the fall of 2022. Results from a [Pew Research Center poll](#) taken last year also suggest that a dip in public concern about climate change occurred around 2022.

Public opinion remains mixed on the degree to which human behavior contributes to change in the climate. Just over one-third (34%) say climate change is caused mainly by human activity while 31% say human activity and natural changes in the environment play equal roles. Another 7% put climate change down mainly to natural causes, with the remainder saying climate change is not happening (23%) or are not sure if it is happening (4%). Just over half of Americans (51%) say there is still time to prevent the worst effects of climate change while just 17% say it is too late.

The *Monmouth University Poll* was conducted by telephone from April 18 to 22, 2024 with 808 adults in the United States. The question results in this release have a margin of error of +/- 4.1 percentage points for the full sample. The poll was conducted by the Monmouth University Polling Institute in West Long Branch, NJ.

QUESTIONS AND RESULTS

(* Some columns may not add to 100% due to rounding.)

[Q1-27 previously released.]

28. How important is it for the federal government to address the issue of climate change – is it extremely important, very important, just somewhat important, or not important?

Trend:	April 2024	Oct. 2022	Sept. 2022	Sept. 2021	Jan. 2021
Extremely important	29%	23%	24%	33%	27%
Very important	23%	27%	25%	27%	33%
Just somewhat important	26%	23%	19%	21%	23%
Not important	22%	26%	32%	19%	16%
(VOL) Don't know	0%	1%	1%	1%	1%
(n)	(808)	(808)	(806)	(802)	(809)

29. Do you think that the world's climate is undergoing a change that is causing more extreme weather patterns and the rise of sea levels, or is this not happening?

Trend:	April 2024	Sept. 2021	Nov. 2018	Dec. 2015
Yes, is happening	73%	76%	78%	70%
No, is not happening	23%	18%	16%	22%
(VOL) Don't know	4%	6%	5%	8%
(n)	(808)	(802)	(802)	(1,006)

30. Would you say climate change is a very serious, somewhat serious, or not too serious problem?

Trend:	April 2024	Sept. 2021	Nov. 2018	Dec. 2015
Very serious	46%	56%	54%	41%
Somewhat serious	20%	14%	17%	19%
Not too serious	6%	6%	7%	9%
(VOL) Don't know	0%	0%	0%	1%
Climate change is not happening (from Q29)	23%	18%	16%	22%
Not sure climate change happening (from Q29)	4%	6%	5%	8%
(n)	(808)	(802)	(802)	(1,006)

31. Is climate change caused more by human activity, more by natural changes in the environment, or by both equally?

Trend:	April 2024	Sept. 2021	Nov. 2018	Dec. 2015
Human activity	34%	35%	29%	27%
Natural changes in the environment	7%	8%	10%	8%
Both equally	31%	32%	37%	34%
(VOL) Don't know	0%	1%	2%	1%
Climate change is not happening (from Q29)	23%	18%	16%	22%
Not sure climate change happening (from Q29)	4%	6%	5%	8%
(n)	(808)	(802)	(802)	(1,006)

32. Do you think there is still time to prevent the worst effects of climate change or is it already too late?

Trend:	April 2024	Sept. 2021	Nov. 2018
Still time	51%	51%	54%
Too late	17%	19%	16%
(VOL) Nothing we can/should do about it	2%	2%	4%
(VOL) Don't know	3%	4%	5%
Climate change is not happening (from Q29)	23%	18%	16%
Not sure climate change happening (from Q29)	4%	6%	5%
(n)	(808)	(802)	(802)

33. In general, do you support or oppose the U.S. government doing more to reduce the type of activities that cause climate change and sea level rise?

Trend:	April 2024	Sept. 2021	Nov. 2018	Dec. 2015
Support	59%	66%	69%	64%
Oppose	36%	27%	22%	26%
(VOL) Depends	1%	2%	4%	4%
(VOL) Don't know	4%	4%	5%	7%
(n)	(808)	(802)	(802)	(1,006)

[Q34-37 held for future release.]

METHODOLOGY

The *Monmouth University Poll* was sponsored and conducted by the Monmouth University Polling Institute from April 18 to 22, 2024 with a probability-based national random sample of 808 adults age 18 and older. Interviews were conducted in English, and included 163 live landline telephone interviews, 349 live cell phone interviews, and 296 online surveys via a cell phone text invitation. Telephone numbers were selected through a mix of random digit dialing and list-based sampling. Landline respondents were selected with a modified Trol Dahl-Carter youngest adult household screen. Interviewing services were provided by Braun Research, with sample obtained from Dynata (RDD, n=484), Aristotle (list, n=168) and a panel of prior Monmouth poll participants (n=156). Monmouth is responsible for all aspects of the survey design, data weighting and analysis. The full sample is weighted for region, age, education, gender and race based on US Census information (ACS 2021 one-year survey). For results based on this sample, one can say with 95% confidence that the error attributable to sampling has a maximum margin of plus or minus 4.1 percentage points adjusted for sample design effects (1.41). Sampling error can be larger for sub-groups (see table below). In addition to sampling error, one should bear in mind that question wording and practical difficulties in conducting surveys can introduce error or bias into the findings of opinion polls.

Demographics (weighted)

Party (self-reported): 25% Republican, 44% Independent, 31% Democrat

Sex: 49% male, 50% female, 1% other

Age: 30% 18-34, 32% 35-54, 38% 55+

Race: 61% White, 12% Black, 17% Hispanic, 9% Asian/other

Education: 38% high school or less, 29% some college, 17% 4 year degree, 16% graduate degree

MARGIN OF ERROR		unweighted sample	moe (+/-)
TOTAL		808	4.1%
REGISTERED VOTER	Yes	746	4.3%
	No	62	14.8%
SELF-REPORTED PARTY ID	Republican	188	8.5%
	Independent	344	6.3%
	Democrat	272	7.1%
IDEOLOGY	Liberal	212	8.0%
	Moderate	308	6.6%
	Conservative	272	7.1%
GENDER	Male	399	5.8%
	Female	403	5.8%
AGE	18-34	210	8.0%
	35-54	284	6.9%
	55+	312	6.6%
CHILDREN IN HOME	Yes	196	8.3%
	No	610	4.7%
RACE	White, non-Hispanic	543	5.0%
	Other	254	7.3%
COLLEGE GRADUATE	No degree	352	6.2%
	4 year degree	456	5.5%
WHITE COLLEGE	White, no degree	228	7.7%
	White, 4 year degree	315	6.6%
INCOME	<\$50K	184	8.6%
	\$50 to <\$100K	218	7.9%
	\$100K+	369	6.1%

###

Monmouth University Poll -- NATIONAL -- 5/06/24

		TOTAL	REGISTERED TO VOTE		PARTY ID			POLITICAL IDEOLOGY		
			Yes	No	Rep	Ind	Dem	Lib	Mod	Con
28. How important is it for the federal government to address the issue of climate change – is it...	Extremely important	29%	29%	29%	7%	24%	55%	70%	26%	6%
	Very important	23%	22%	34%	12%	25%	29%	24%	31%	12%
	Just somewhat important	26%	26%	24%	40%	28%	12%	6%	27%	38%
	Not important	22%	23%	11%	42%	23%	4%	1%	15%	44%
	[VOL] Dont know	0%	0%	1%	0%	0%	0%	0%	0%	0%

		GENDER		AGE 3-WAY			CHILDREN IN HOME		RACE	
		Male	Female	18-34	35-54	55+	Yes	No	White non-Hisp	Hsp-Blk-Asn-Oth
28. How important is it for the federal government to address the issue of climate change – is it...	Extremely important	27%	32%	31%	25%	31%	24%	31%	28%	31%
	Very important	18%	28%	24%	24%	21%	25%	22%	18%	30%
	Just somewhat important	26%	25%	23%	27%	27%	26%	26%	27%	23%
	Not important	29%	16%	22%	25%	21%	25%	21%	26%	15%
	[VOL] Dont know	0%	0%	0%	0%	0%	0%	0%	0%	0%

		COLLEGE GRAD		WHITE COLLEGE DEGREE		INCOME		
		No degree	4 yr degree	White no degree	White college	<\$50K	\$50-100K	\$100K+
28. How important is it for the federal government to address the issue of climate change – is it...	Extremely important	25%	37%	23%	38%	34%	27%	27%
	Very important	23%	22%	18%	19%	25%	21%	23%
	Just somewhat important	29%	20%	32%	20%	24%	30%	24%
	Not important	23%	21%	28%	23%	17%	22%	25%
	[VOL] Dont know	0%	0%	0%	0%	0%	0%	0%

		TOTAL	REGISTERED TO VOTE		PARTY ID			POLITICAL IDEOLOGY		
			Yes	No	Rep	Ind	Dem	Lib	Mod	Con
29. Do you think that the worlds climate is undergoing a change that is causing more extreme weather patterns and the rise of sea levels, or is this not happening?	Yes, is happening	73%	72%	75%	51%	71%	92%	96%	81%	50%
	No, is not happening	23%	24%	18%	43%	25%	5%	3%	15%	44%
	[VOL] Dont know	4%	4%	7%	6%	4%	3%	1%	4%	6%

		GENDER		AGE 3-WAY			CHILDREN IN HOME		RACE	
		Male	Female	18-34	35-54	55+	Yes	No	White non-Hisp	Hsp-Blk-Asn-Oth
29. Do you think that the worlds climate is undergoing a change that is causing more extreme weather patterns and the rise of sea levels, or is this not happening?	Yes, is happening	66%	79%	78%	72%	70%	74%	72%	68%	80%
	No, is not happening	29%	17%	20%	24%	24%	22%	24%	27%	17%
	[VOL] Dont know	5%	4%	2%	4%	6%	4%	4%	5%	3%

Monmouth University Poll -- NATIONAL -- 5/06/24

		COLLEGE GRAD		WHITE COLLEGE DEGREE		INCOME		
		No degree	4 yr degree	White no degree	White college	<\$50K	\$50-100K	\$100K+
29. Do you think that the worlds climate is undergoing a change that is causing more extreme weather patterns and the rise of sea levels, or is this not happening?	Yes, is happening	71%	77%	64%	75%	79%	70%	71%
	No, is not happening	25%	20%	31%	20%	15%	27%	25%
	[VOL] Dont know	4%	3%	5%	5%	6%	2%	4%

		TOTAL	REGISTERED TO VOTE		PARTY ID			POLITICAL IDEOLOGY		
			Yes	No	Rep	Ind	Dem	Lib	Mod	Con
30. Would you say climate change is a very serious, somewhat serious, or not too serious problem?	Very serious	46%	45%	51%	13%	43%	77%	89%	50%	15%
	Somewhat serious	20%	21%	13%	26%	22%	12%	5%	27%	24%
	Not too serious	6%	6%	11%	11%	6%	2%	2%	3%	11%
	[VOL] Dont know	0%	0%	0%	1%	0%	0%	1%	0%	0%
	[Q29] Climate change is not happening	23%	24%	18%	43%	25%	5%	3%	15%	44%
[Q29] Not sure climate change happening	4%	4%	7%	6%	4%	3%	1%	4%	6%	

		GENDER		AGE 3-WAY			CHILDREN IN HOME		RACE	
		Male	Female	18-34	35-54	55+	Yes	No	White non-Hisp	Hsp-Blk-Asn-Oth
30. Would you say climate change is a very serious, somewhat serious, or not too serious problem?	Very serious	40%	52%	50%	44%	44%	46%	46%	40%	57%
	Somewhat serious	19%	21%	24%	18%	20%	23%	19%	22%	17%
	Not too serious	7%	6%	4%	10%	5%	4%	7%	6%	6%
	[VOL] Dont know	0%	0%	0%	0%	0%	0%	0%	0%	0%
	[Q29] Climate change is not happening	29%	17%	20%	24%	24%	22%	24%	27%	17%
[Q29] Not sure climate change happening	5%	4%	2%	4%	6%	4%	4%	5%	3%	

		COLLEGE GRAD		WHITE COLLEGE DEGREE		INCOME		
		No degree	4 yr degree	White no degree	White college	<\$50K	\$50-100K	\$100K+
30. Would you say climate change is a very serious, somewhat serious, or not too serious problem?	Very serious	42%	53%	33%	51%	54%	42%	41%
	Somewhat serious	21%	18%	24%	18%	18%	23%	22%
	Not too serious	7%	5%	6%	5%	6%	6%	8%
	[VOL] Dont know	0%	0%	0%	1%	0%	0%	0%
	[Q29] Climate change is not happening	25%	20%	31%	20%	15%	27%	25%
[Q29] Not sure climate change happening	4%	3%	5%	5%	6%	2%	4%	

Monmouth University Poll -- NATIONAL -- 5/06/24

		TOTAL	REGISTERED TO VOTE		PARTY ID			POLITICAL IDEOLOGY		
			Yes	No	Rep	Ind	Dem	Lib	Mod	Con
31. Is climate change caused more by human activity, more by natural changes in the environment, or by both equally?	Human activity	34%	34%	33%	10%	30%	58%	69%	36%	11%
	Natural changes in the environment	7%	8%	7%	14%	6%	4%	1%	5%	15%
	Both equally	31%	31%	34%	27%	34%	30%	26%	39%	24%
	[VOL] Dont know	0%	0%	1%	1%	1%	0%	0%	1%	0%
	[Q29] Climate change is not happening	23%	24%	18%	43%	25%	5%	3%	15%	44%
	[Q29] Not sure climate change happening	4%	4%	7%	6%	4%	3%	1%	4%	6%

		GENDER		AGE 3-WAY			CHILDREN IN HOME		RACE	
		Male	Female	18-34	35-54	55+	Yes	No	White non-Hisp	Hsp-Blk-Asn-Oth
31. Is climate change caused more by human activity, more by natural changes in the environment, or by both equally?	Human activity	32%	35%	34%	37%	31%	33%	34%	34%	34%
	Natural changes in the environment	8%	7%	5%	9%	8%	5%	8%	7%	9%
	Both equally	26%	36%	38%	26%	30%	37%	29%	27%	37%
	[VOL] Dont know	0%	1%	0%	0%	1%	0%	1%	1%	0%
	[Q29] Climate change is not happening	29%	17%	20%	24%	24%	22%	24%	27%	17%
	[Q29] Not sure climate change happening	5%	4%	2%	4%	6%	4%	4%	5%	3%

		COLLEGE GRAD		WHITE COLLEGE DEGREE		INCOME		
		No degree	4 yr degree	White no degree	White college	<\$50K	\$50-100K	\$100K+
31. Is climate change caused more by human activity, more by natural changes in the environment, or by both equally?	Human activity	27%	47%	26%	48%	31%	33%	38%
	Natural changes in the environment	8%	6%	7%	6%	6%	9%	7%
	Both equally	35%	23%	30%	22%	41%	28%	25%
	[VOL] Dont know	1%	0%	1%	0%	0%	1%	0%
	[Q29] Climate change is not happening	25%	20%	31%	20%	15%	27%	25%
	[Q29] Not sure climate change happening	4%	3%	5%	5%	6%	2%	4%

Monmouth University Poll -- NATIONAL -- 5/06/24

		TOTAL	REGISTERED TO VOTE		PARTY ID			POLITICAL IDEOLOGY		
			Yes	No	Rep	Ind	Dem	Lib	Mod	Con
32. Do you think there is still time to prevent the worst effects of climate change or is it already too late?	Still time	51%	52%	48%	30%	51%	69%	69%	64%	27%
	Too late	17%	16%	22%	13%	17%	20%	24%	13%	16%
	[VOL] Nothing should be done	2%	2%	3%	4%	1%	1%	0%	1%	3%
	[VOL] Dont know	3%	3%	2%	4%	2%	3%	3%	3%	3%
	[Q29] Climate change is not happening	23%	24%	18%	43%	25%	5%	3%	15%	44%
	[Q29] Not sure climate change happening	4%	4%	7%	6%	4%	3%	1%	4%	6%

		GENDER		AGE 3-WAY			CHILDREN IN HOME		RACE	
		Male	Female	18-34	35-54	55+	Yes	No	White non-Hisp	Hsp-Blk-Asn-Oth
32. Do you think there is still time to prevent the worst effects of climate change or is it already too late?	Still time	44%	58%	53%	49%	52%	49%	52%	50%	54%
	Too late	19%	15%	22%	16%	13%	22%	15%	14%	22%
	[VOL] Nothing should be done	2%	1%	1%	2%	2%	1%	2%	1%	2%
	[VOL] Dont know	1%	5%	2%	4%	3%	2%	3%	3%	2%
	[Q29] Climate change is not happening	29%	17%	20%	24%	24%	22%	24%	27%	17%
	[Q29] Not sure climate change happening	5%	4%	2%	4%	6%	4%	4%	5%	3%

		COLLEGE GRAD		WHITE COLLEGE DEGREE		INCOME		
		No degree	4 yr degree	White no degree	White college	<\$50K	\$50-100K	\$100K+
32. Do you think there is still time to prevent the worst effects of climate change or is it already too late?	Still time	48%	58%	47%	54%	54%	52%	50%
	Too late	18%	14%	12%	15%	19%	17%	15%
	[VOL] Nothing should be done	2%	1%	2%	1%	2%	0%	3%
	[VOL] Dont know	2%	4%	3%	4%	4%	2%	2%
	[Q29] Climate change is not happening	25%	20%	31%	20%	15%	27%	25%
	[Q29] Not sure climate change happening	4%	3%	5%	5%	6%	2%	4%

		TOTAL	REGISTERED TO VOTE		PARTY ID			POLITICAL IDEOLOGY		
			Yes	No	Rep	Ind	Dem	Lib	Mod	Con
33. In general, do you support or oppose the U.S. government doing more to reduce the type of activities that cause climate change and sea level rise?	Support	59%	60%	51%	30%	55%	89%	93%	70%	26%
	Oppose	36%	36%	33%	61%	41%	6%	6%	24%	66%
	(VOL) Depends	1%	1%	3%	2%	1%	1%	0%	1%	2%
	[VOL] Dont know	4%	3%	13%	7%	3%	4%	1%	5%	6%

Monmouth University Poll -- NATIONAL -- 5/06/24

		GENDER		AGE 3-WAY			CHILDREN IN HOME		RACE	
		Male	Female	18-34	35-54	55+	Yes	No	White non-Hisp	Hsp-Blk-Asn-Oth
33. In general, do you support or oppose the U.S. government doing more to reduce the type of activities that cause climate change and sea level rise?	Support	53%	65%	62%	55%	60%	56%	60%	55%	65%
	Oppose	43%	28%	34%	38%	34%	41%	34%	38%	30%
	(VOL) Depends	1%	1%	1%	1%	1%	0%	1%	2%	1%
	[VOL] Dont know	3%	5%	2%	6%	5%	3%	5%	5%	4%

		COLLEGE GRAD		WHITE COLLEGE DEGREE		INCOME		
		No degree	4 yr degree	White no degree	White college	<\$50K	\$50-100K	\$100K+
33. In general, do you support or oppose the U.S. government doing more to reduce the type of activities that cause climate change and sea level rise?	Support	56%	64%	52%	62%	68%	57%	55%
	Oppose	38%	31%	41%	34%	26%	39%	40%
	(VOL) Depends	1%	1%	2%	1%	1%	1%	1%
	[VOL] Dont know	5%	3%	6%	3%	5%	3%	3%