



MONMOUTH UNIVERSITY

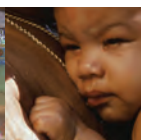


TAIYEB AND AMTA MAMA INTERNATIONAL SOCIAL WORK FELLOWSHIP

TAIYEB AND AMTA MAMA INTERNATIONAL SOCIAL WORK FELLOWSHIP

When social workers connect with individuals, families, communities, or governments, they become agents of social change and economic justice. Increasingly, social workers are called to work not only in the United States but in many other parts of the world.

Each year, the Taiyeb and Amta International Social Work Fellowship provides financial support for round-trip airfare and a small stipend for up to two eligible graduate social work students in the International and Community Development concentration at Monmouth University.



“Actually living and working in an African community was so much better than sitting in a classroom listening to professors talk about their experiences. I learned, first hand, the importance of cultural competency while expanding my own horizons and world view, at the same time. My experience deepened my passion for working in Africa, and strengthened my love for the African people. My hope is to live in Africa in the future.”

—NICK CROSS '04

(FIELD PLACEMENT—GHANA, AFRICA)



THE FIELD ABROAD

Social work has a long history of solving social problems and making change at the community, organizational, societal, and global levels. With unprecedented degrees of poverty, famine, and war taking place in developing countries, demand for specialized macro workers is intensifying.

At Monmouth University, Master of Social Work candidates pursuing the International and Community Development (ICD) concentration learn to apply macro social work skills like:

- social policy development and implementation;
- community organizing;
- social planning and program development;
- evaluation of programs and services.

FACULTY PROFILE



ROBIN MAMA, PhD

IS MONMOUTH UNIVERSITY'S GRADUATE SOCIAL WORK PROGRAM DIRECTOR AND CHAIR OF THE DEPARTMENT OF SOCIAL WORK. SHE IS ALSO A REPRESENTATIVE TO THE INTERNATIONAL FEDERATION OF SOCIAL WORKERS AT THE UNITED NATIONS.

Dr. Mama believes in giving students the tools to champion human rights and social justice at the local, national, and international levels. Recognizing the increasing demand for social

workers with specialized international skills, Dr. Mama's husband, Dr. Saifuddin Mama, established the Taiyeb and Amta Mama International Social Work Fellowship, in honor of his parents.

"This fellowship is a way of recognizing the hard-won achievements of my in-laws, who are from the Indian subcontinent," Robin Mama said. "MSW students can learn much from a field placement beyond America's borders."



More specifically the ICD curriculum focuses on: sustainable economic development, community and social development, micro credit lending, capacity building, program planning, needs assessment, direct equity, equality and social justice issues, legislative organizing, grass roots advocacy, and community organizing.

Students completing this program have the unique opportunity to experience an eight-week field placement working abroad in international community development and related focused projects.

HOW TO PARTICIPATE



The Taiyeb and Amta Mama International Social Work Fellowship application can be downloaded from www.monmouth.edu/socialwork. Candidates are encouraged to discuss the fellowship application with their advisor before applying. The deadline for applications is January 15 of the year of the anticipated spring field placement.

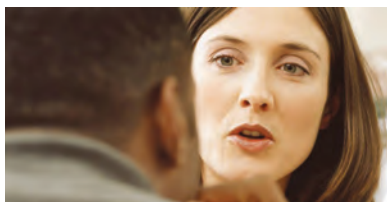
For those interested in applying for the Taiyeb and Amta Mama International Social Work Fellowship, the Department of Social Work is located in room 316, McAllan Hall. The office is open from 8:45 a.m. until 5 p.m.

For telephone inquiries, please contact the Department of Social Work at 732-571-3543, or send e-mail to: swdept@monmouth.edu.



FELLOWSHIP REQUIREMENTS

- Fellowship awardees are chosen from students who are planning to spend part of their spring semester completing fieldwork in Africa, the Indian subcontinent, or Southeast Asia.
- Mama Fellows must complete all course work, and fieldwork requirements, necessary for graduation from the MSW program at Monmouth.
- Fellows must present their work and/or research at a University forum upon return to the United States.





ON TRACK FOR EXCELLENCE

Monmouth University's MSW program prepares its graduates for professional practice with a commitment to improving the quality of life of vulnerable individuals, families, groups, and communities—locally, nationally, and internationally. The program is firmly rooted in human rights and social justice-based social work practice.

Graduates are expected to develop their understanding, analysis, and evaluation of human experiences at the level of individuals, families, and society in varied cultural and social contexts. In addition to the International and Community Development concentration, students may elect to focus their graduate MSW studies on clinical practice with families and children.

**MONMOUTH
UNIVERSITY**

Office of Graduate Admission, West Long Branch, NJ 07764-1898
gradadm@monmouth.edu • www.monmouth.edu/admission • 800-320-7754 • 732-571-3452

www.monmouth.edu