

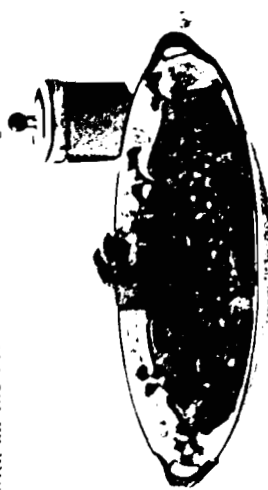
Partner—or Housekeeper?

On the threshold of the new home the wise bride resolves never to let her housewifely duties rob her of her husband's companionship

constantly being invented for her—the conveniences and little appliances that make life easier and more worth living! Every household task is simplified to a degree that would make our grandmothers green with envy!

Take the preparation of the evening meal, for instance. How easily, how quickly, it can be done now, compared with the old days!

Even the meat dish—as witnessed by those shown on this page—no longer presents any difficulties! It is now possible to prepare the most delectable dishes in practically no time at all. Because with Libby's Packaged Meats you are not "starting from scratch." They come to you with all the tiresome work of cooking done.



Vienna Sausage with baked beans—a hearty meal

How Libby's Packaged Meats will save you time and labor! Look them up at your grocery store. They are available in any city.

The most alert housewives in America are now depending on these almost-ready-to-serve meats. They have learned that there are no finer meats obtainable than Libby's Packaged Meats—Corned Beef, Dried Beef, Vienna Sausage, Veal Loaf and a long list of other delicacies.

They are packaged in Chicago—the meat center of the world—where the choicest meats are available to the Libby kitchens. Only cuts from fresh, Government-inspected meats are used.



WE A NEW NOTE MMER HATS

IN THE beginning it was a leghorn hat, then some were ruthlessly cut out the crown and put in its place a set of transparent dome of white tulle. Over this they trailed with magic fingers bits of fringe braid in mauve, blue, maroon and rose. Taffeta, mauve and rose tints stretch over and beyond the brim edge.

CAN it be? Yes, it is the pery haircloth in rags, blue, transparent, wool-like a brocade fabric in all-over design. Light though promising endurance it covers the brim, and it folds droops the adjustable crown, banded with soft satin ribbon with fringed ends overhanging the sides.

