

Ultipro Login Instructions

If you are an existing employee (hired on/before 5/8/11):

To log in -

Go to: <http://ultipro.monmouth.edu> in Internet Explorer

You will be prompted to enter your Monmouth user name and domain (monmouth0 or hawkdom2) password, i.e. the one used to access your PC.

If you are a new employee (hired after 5/8/11):

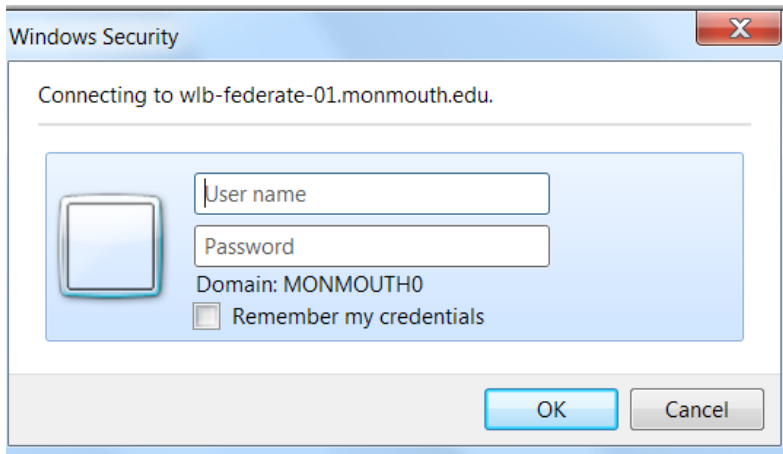
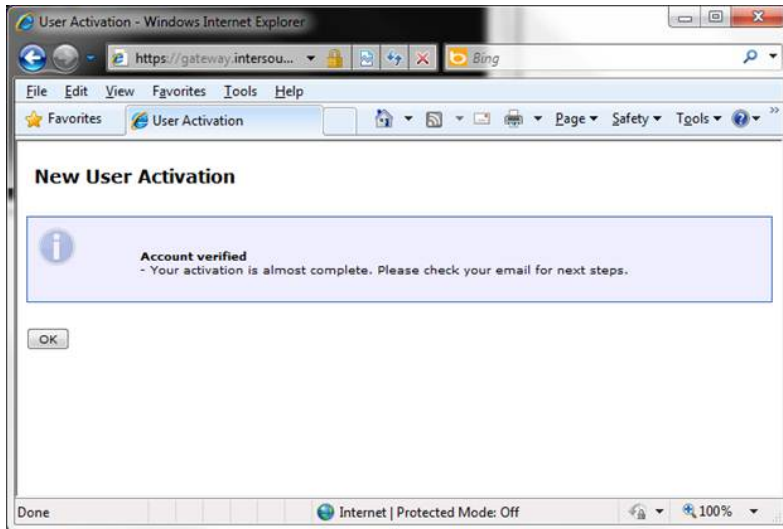
Go to: <http://Ultipro.monmouth.edu>

Fill out your Birth Date, Employee Id and City.

New User Activation

Welcome to the Monmouth University activation page.

Date of Birth: Example: 1/13/1961
Enter Your Employee Number: Example: 000001234
Enter your Home City Example: Long Branch



You will get a confirmation email, click to complete your activation.

From: Intersourcing_NoReply@intersourcing.com
To: Gould, Tease
Cc:
Subject: Account activation

Please select the link below to complete your account activation.
[Click here to complete your account activation](#)