



Fall 2011

**Yelena Bonner**

February 15, 1923 – June 18, 2011 p. 5



**Professional Education Program**

Continuing Education for Social Workers

The School of Social Work at Monmouth University



It's that time of year again at Monmouth University, when we welcome back students as they begin another chapter in their academic careers. In the School of Social Work we're excited to begin our own new chapter by welcoming Janine Vasconcelos, MSW, LSW as the inaugural Coordinator of Professional Education. Ms. Vasconcelos joins us with a background in child and adolescent case management as well as policy and political work and is eager to expand the program while maintaining its commitment to excellence.



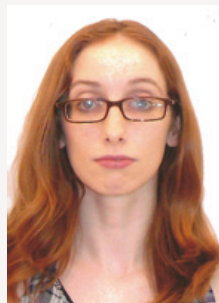
Here in the Professional Education Program we know that for social workers learning is a lifelong endeavor. So why not go “back to school” this Fall by signing up for one of our exciting and high quality workshops? Our programs are delivered in comfortable state of the art facilities by experts who are passionate about their topics. Not only will our offerings help you on your path towards recertification, they will enrich your professional experience. Plus, it's a great season to explore our beautiful campus – not to mention enjoy our catered lunches. So sign up today for lifelong learning!



Robin Sakina Mama, Ph.D.  
Professor  
Dean, The School of Social Work

The cover artwork is titled “Role Models: Yelena Bonner 1923-2011.” The image is used with permission from the artist, Megan Gale.

New Jersey-based visual artist **Megan Gale** has worked in various mediums since 2004. After publishing a monthly comic strip in Upstage Magazine, Megan launched Rock Candy, a graphic narrative periodical, and illustrated many posters for art exhibits, rock concerts, and business advertisements. She has exhibited her work regionally, in cities such as New Brunswick, Red Bank, and Akron, Ohio. Currently working freelance, Megan plans to return to publishing with a new comic title later this year. Contact her at [subgroovy@gmail.com](mailto:subgroovy@gmail.com)



Brochure design by Jenny Blankenship

All Continuing Education Units (CEUs) are non-clinical unless otherwise specified.

Look for Cultural Competence tags to find workshops that meet special license renewal requirements.

**CULTURAL COMPETENCE**



# 1

## Adopting: Sound Choices = Strong Families

6 CEUs Friday, October 14

\$109 The Club at Magill Commons, Rooms 107 & 108  
9am to 4pm

This workshop is designed to increase participant's overall knowledge and enhance understanding of adoption practice and its impact on both birth families and adoptive families. Adoption, its joys, the challenges and the many nuanced factors that surround it will be addressed. Adoption across a lifetime and the various roles and rewards for all involved will also be discussed. Ethical issues and balance throughout the process are important components in this workshop.

All participants will receive a copy of Ms. Johnston's most recent book, "Adopting: Sound Choices, Strong Families" which combines the author's first two books "Adopting after Infertility" and "Launching a Baby's Adoption."

**Patricia Irwin Johnston, M.S.** is an infertility and adoption educator who has provided trainings for consumers and professionals of infertility and adoption services for 25 years. The publisher at Perspectives Press, Inc: The Infertility and Adoption Publisher, Pat is the Benjamin Franklin Award winning author of numerous articles and several books. She was a regular columnist for *Adoptive Families* magazine and was the book review editor for the professional journal *Adoption Quarterly*. She served as a long-term volunteer for RESOLVE Inc., the national fertility-impaired network, and has been named an Adoption Activist of the Year by the North American Council on Adoptable Children, a Friend of Adoption by The Adoptive Parents Committee of New York State, a national Angel in Adoption by Indiana Congressional Representative Julia Carson and the Congressional Coalition on Adoption. She served as a board member for the International Council on Infertility Information Dissemination, Adoptive Families of America and RESOLVE. And perhaps most importantly is a member of a family which has experienced two generations of infertility and expanded itself through three generations by adoption.

# 2

## Anti- Bullying Bill of Rights Legislation: A workshop for Educators, Mental Health Professionals, Parents and Students

*Tuesday, October 18* 6 CEUs  
*The Club at Magill Commons, Rooms 107 & 108* \$98  
*9am to 4pm*



As a result of the recent passage of the "Anti-Bullying Bill" New Jersey school districts are required to develop and maintain policies regarding harassment, bullying, and intimidation. The new legislation encompasses the larger issues of suicide prevention, the effects of bullying on students and the link between school violence and bullying. This workshop will explore all these issues plus give participants guidelines as to how to conduct an effective interview, what questions to ask, and how to document and proceed with investigations on allegations of bullying and harassment. Definitions of bullying, sexual harassment and intimidation will be provided, and techniques to train staff and students will be discussed. The sensitive issue of working with parents will also be explored. This workshop is a must for school personnel who will be responsible for implementing the requirements of this legislation.

**Rosemary Richards** has 19 years of experience as a school social worker and 9 years as a Substance Awareness Coordinator in New Jersey public schools. She has also been a special education teacher and a Division of Youth and Family Services social worker. Rosemary is a collaborator on a social work textbook entitled Forensic Social Work which was published in 2010. She has presented at conferences on the topic of adolescent substance abuse, threat assessment and violence prevention in schools and adolescent depression.

# 3

## What EVERYONE Needs to Know about Budgets

*Friday, October 21* 6 CEUs  
*The Club Dining Room at Magill Commons* \$98  
*9am to 4pm*



Budgets are not just for financial departments anymore. This workshop will provide both an overview of the general concepts of budgets as well as technical examples of program budgeting. It is becoming more and more important for all agency employees to understand how the budget ties program planning to cash management. The workshop explores how the financial process permeates throughout the agency, including how budgets can be used as a tool for implementing the strategic plan as well as focusing fund raising efforts. A well-planned budget can assist executive management in prioritizing resources.

*Continued on the next page*



*Continued from the previous page*

## What EVERYONE Needs to Know about Budgets

The technical aspect of the workshop provides hands-on strategies for incorporating individual program financial reporting into the overall agency budget process.

**Darcy Dobens, MBA, MSW, LSW** is an Alumnus of Monmouth University Schools of Business and Social Work. She has worked both in the Investment Management and Non Profit industries for 18 years. Darcy is currently a member of the NASW-NJ finance committee advising the Board of Trustees as well as an adjunct professor at Monmouth University in the School of Social Work.

### **Yelena Bonner**

**February 15, 1923 – June 18, 2011**

For the first in a three-part series the artist titled "Role Models," our cover highlights Yelena Bonner, one of the most enduring symbols of the Soviet Union dissident movement. Born in modern day Turkmenistan Bonner saw her father murdered and her mother exiled by Stalin's regime, while WWII saddled her with debilitating eye and heart problems that would affect her for the rest of her life. In the face of such odds and armed with a distrust of the Soviet state Bonner dedicated her life to making the political personal and her tireless commitment to taking on the plight of anyone who crossed her path would become her signature. While her husband, Nobel Peace Prize winner Andrei Sakharov, wrote prolifically to spread the dissident movement Bonner strategically and intensely worked to help each individual victim of the Soviet regime, believing small acts helped to fix the system as a whole. Her home became the meeting ground for dissident activists. She would prepare meals, set up trials, raise money and anything else she could do to keep the movement, and those who were part of it, going. Perhaps her most enduring mark came in the shape of her fierce promotion of Sakharov. She was the means by which he communicated with the outside world, spreading the truths of the Soviet state and the ideals of the dissident movement, by providing him with information and forwarding his writings abroad while he was exiled – before she too was exiled. She persisted in her passionate fight for human rights even as the Soviet Union collapsed and right up until her death was a vocal and prominent critic of Russian leaders whom she felt violated human rights. Bonner has been remembered for her fiery personality, direct manner of speaking and intense dedication to human rights in the face of seemingly insurmountable odds. She was a founding member of the Moscow Helsinki Group, started the Andrei Sakharov Foundation, and was the recipient of numerous international human rights awards including the Rafto Prize and the European Parliament's Robert Schumann medal. She is the author of *Alone Together* and *Mothers and Daughters*.



# 4



## Preventing School Violence

Friday, October 28 **6 CEUs**  
The Club at Magill Commons, Rooms 107 & 108 **\$98**  
9am to 4pm

Incidents of school violence are on the rise and bullying, substance abuse, gang activity and political unrest may all be factors as to why. Meanwhile, psychiatric issues including depression are often cited in these incidents. This workshop will explore all these factors and the role they play in potential and actual school violence. Participants will review recent school shooting incidents and learn about how to craft an effective policy regarding preventing school violence. Participants will be given information about identifying the at-risk student, both as a target and as a victimizer. Interviewing techniques and information about suicide prevention will also be included in this workshop.

**Rosemary Richards** has 19 years of experience as a school social worker and 9 years as a Substance Awareness Coordinator in New Jersey public schools. She has also been a special education teacher and a Division of Youth and Family Services social worker. Rosemary is a collaborator on a social work textbook entitled *Forensic Social Work* which was published in 2010. She has presented at conferences on the topic of adolescent substance abuse, threat assessment and violence prevention in schools and adolescent depression.



# 5 & 8



## Enhancing Clinical Group Work Skills: Engaging Clients Using **Action Methods**

Group work has been proven to be a powerful and cost effective treatment modality for achieving clinical goals. This workshop series will help clinicians to incorporate exciting, focused and outcome driven techniques into their work with groups. Applying action methods provides a multidimensional way to explore relationships, improve behaviors, express feelings, explore our dreams, and resolve past traumas. These evidence-based teachings are from the works of Jacob L. Moreno, the originator of group therapy and the founder of psychodrama and sociometry. Participants will earn 6 clinical CEUs and six hours toward a certification in Psychodrama, Sociometry and Group Psychotherapy for each workshop. Whether you are new to action methods or have attended past Monmouth University action method trainings, this is your opportunity to learn, refresh and refine your skills.

**Action Methods** Workshop I & II

*Continued on the next page*

# 5

## Action Methods Workshop I

*6 Clinical CEUs Tuesday, November 1*  
*\$98 The Club at Magill Commons, Room 107*  
*9am tp 4pm*

This workshop, either in combination with or separate from Workshop II, will provide participants with a hands-on understanding of and opportunity to practice a variety of action strategies. Participants will learn how to use doubling, role reversal, warm-ups, surplus reality and contract building. These techniques promote a sense of safety, inclusiveness and creativity which will bring depth, enthusiasm and enjoyment to any group experience.

# 8

## Action Methods Workshop II

*6 Clinical CEUs Tuesday, November 15*  
*\$98 The Club at Magill Commons, Room 107*  
*9am to 4pm*

This workshop can be taken in combination with or separate from Workshop I. It is designed to provide a more in-depth understanding of and additional practice in the utilization of action strategies. Participants will learn more about building group cohesion and using their own creativity. Action methods increase the comfort and confidence of the facilitator. Participants will achieve an understanding of how and why these approaches work and when they can best be utilized. A full psychodrama will be conducted and processed with the group.

**Scottie Urmev LCSW, CP, PAT** is a licensed clinical social worker and board certified psychodramatist who has worked along the clinical spectrum including inpatient, outpatient, intensive outpatient, partial hospitalization, and private practice settings. She received her Bachelor's of Science in Psychology from Saint Peter's College and her Masters in Social Work from Monmouth University. Scottie has over 18 years of training in psychodrama, sociometry, and group psychotherapy and has applied this expertise to a multitude of clinical psychotherapy groups with children and adults. Currently, Scottie is building a private practice in individual and group psychotherapy. Scottie is also engaged in the process to become a certified educator and trainer in psychodrama and currently offers ongoing training groups locally, presents training workshops at local and national conferences, and offers continuing education to public and private agencies.

**Ron Collier, LCSW**, is a graduate of Barry University in Miami, Florida. He has held both clinical and supervisory positions in social work for the past 30 years. He is currently building a private practice in individual and group therapy. In 2006, Ron received his certification in Psychodrama, Sociometry, and Group Psychotherapy, and is now working on his certification as a Trainer, Educator and Practitioner of Psychodrama. This includes co-leading an ongoing psychodrama training group with Scottie Urmev. Ron has always found introducing students to careers in social work to be particularly rewarding. Ron was awarded the second annual Bertha Capen-Reynolds Award as the Outstanding Social Work Field Supervisor for Monmouth University in 2007. He is continuing his affiliation with the University as an Adjunct Professor in the School of Social Work.

**6**

## Improving Communication When Working With Families

*Friday, November 4  
The Club at Magill Commons, Rooms 107 & 108  
9am to 4pm*

*6 Clinical CEUs  
\$98*

The idea of working with families can be challenging. This workshop will provide a theoretical framework for the process of effectively working with families. Various communication techniques will be explored to assist participants in their practice setting. Specific parenting techniques will be discussed in order to help participants educate and role model for parents/caregivers. Participants will gain a working knowledge of the techniques of doubling and role reversal; while various action methods to aid the practitioner in warming up to their own family dynamics, in order to prevent countertransference, will also be explored.

**Lisa Hillman, MSW, LCSW, CP** is a Licensed Clinical Social Worker and Certified Psychodramatist who has worked with children, adolescents, adults and families in private practice, public schools and as a consultant. Lisa has lead hundreds of groups addressing such topics as social skills, decreasing anxiety, and conflict resolution. Lisa has presented nationally, and serves as a trainer at the collegiate level as well as at private schools. As a psychodramatist, Lisa uses sociodrama and psychodrama, which utilize action-oriented techniques. These non-threatening techniques prove to be very useful when working with challenging clients and groups.

**7**

## Just One More Bet...

*Friday, November 11  
The Club Dining Room at Magill Commons  
9am to 4pm*

*6 Clinical CEUs  
\$98*

This workshop will provide an overview introductory course on Pathological Gambling, often referred to as a “hidden addiction.”

The criteria for diagnosing Compulsive/ Pathological Gambling as an Impulse Control Disorder will be examined, the stages of gambling and co-occurring disorders associated with such compulsive behavior will also be explored. Current treatment strategies and available

*Continued on the next page*



*Continued from the previous page*

## Just One More Bet...

supportive and treatment programs for both the gambler and the loved ones affected by the destructive behavior common to this disease will be reviewed.

**Joanne Arnold-Velcheck, LCSW, LCADC, CTTS, DRCC** obtained a BA from Georgian Court College and an MSW from Monmouth University. She has been working with the addicted and the co-occurring populations for over a decade. She has received further training and certification on treating tobacco dependence. Mrs. Arnold-Velcheck also has extensive training and experience with counseling compulsive gamblers. Currently, Mrs. Arnold-Velcheck is the Director of Addiction Services for AtlantiCare Behavioral Health in Atlantic County and has a private practice in Ocean County.



## Erotic Intelligence

*6 Clinical CEUs Friday, November 18*  
*\$98 The Club Dining Room at Magill Commons*  
*9am to 4pm*

What is “erotic intelligence?” Erotic intelligence is the ability for an individual and couple to sustain passion, eroticism and playfulness in their lives. In this workshop you will develop an understanding of erotic intelligence, practice strategies for assessing passion and for exploring a client’s sexual upbringing. The intersection of sex and culture will be examined. You will explore your own sexual upbringing and examine societal and cultural messages about sex and how they can impact the development of erotic intelligence.

**Ruth Goldsmith, MSW, LCSW** specializes in the art of talking about sex. As a Sexuality Educator for the past 18 years and a Psychotherapist for the past ten, she has sought to increase clients’ comfort with their sexual selves and to facilitate therapists’ ability to address clients’ sexual issues. Ms. Goldsmith has presented continuing education workshops about sexuality and couples, adolescent sexuality, and “Chimera” self defense for women, to organizations throughout the State of NJ, including the NASW annual conference. Ms. Goldsmith was a group facilitator with the Human Sexuality Program, aka “Sex Week”, at the UMDNJ Medical School and an adjunct faculty at Rutgers University, conducting the course, “How to Teach HIV Education.” This fall she is teaching “Clinical Social Work Practice” in the Rutgers MSW program. Ms. Goldsmith is currently a candidate at the Center for Psychoanalysis and Psychotherapy of New Jersey and runs a private practice in Somerville, NJ where she works with adults, adolescents and couples.

# 10



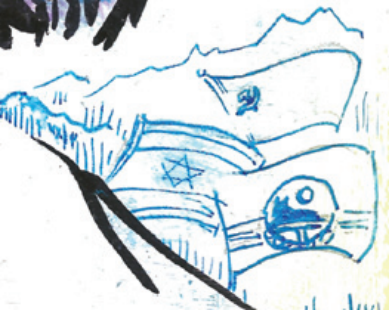
## Energy Psychology

*Tuesday, November 29*  
*The Club at Magill Commons, Rooms 107 & 108*  
*9am to 4pm*

*6 Clinical CEUs*  
*\$98*

Energy psychology addresses the relationship of energy systems to emotion, cognition, behavior and health. These systems include electrical activity of the nervous system and heart, meridians, biophotons, biofields, etc. Although psychological functioning involves thought, emotions, chemistry, neurology, genetics and environmental aspects, at an essential level bioenergy is also involved. In this workshop some forms of energy psychology such as Thought Field Therapy, Pranic Healing and Superbrain Yoga will be reviewed. Thought Field Therapy (TFT) is the sequential tapping procedure which provides a code to nature's healing system. Pranic Healing is a comprehensive system of subtle energy healing utilizing "prana" in balancing, harmonizing and transforming the body's energy processes. Superbrain Yoga is a simple and effective technique to energize and recharge the brain. It is based on the principles of subtle energy and ear acupuncture. Participants will become familiar with using these tools and will find they help move people through their issues quite rapidly. No matter your professional area they are a great addition to your skill set.

**Debbie McCann-Call, MSW, LCSW** received her Bachelors of Arts and Masters of Social Work degrees from Rutgers University in New Brunswick, New Jersey. In addition, she received hypnotherapy training through the Milton Erickson Institute and the American Society for Clinical Hypnosis. She has worked with clients of all ages and currently has a private practice in Middletown, NJ. Debbie began her training in Pranic Healing in 1998. She has found it to be invaluable with clients as well as in self-care. Debbie facilitates free meditations at several libraries.



# 11

CULTURAL COMPETENCE

## Social Work and Migration: Working with Immigrants and Refugees

6 CEUs Monday, December 5  
\$98 The Club Dining Room at Magill Commons  
9am to 4pm

An increasing number of individuals seeking services are new immigrants. It is estimated that by mid-century newcomers will make up almost half of the population in the United States. In order to remain adaptive, competitive and effective; social workers, nonprofit organizations, and policy makers must be prepared to work with immigrants and their families. Successful social work with immigrants must begin with an understanding of their legal status and how that status impacts their housing, employment, health care, education, and virtually every other aspect of life.

This full-day workshop offers an overview of the history of migration, legal definitions of newcomers, obtaining documents for lawful permanent residence, refugee and asylum status, grounds for exclusion and deportation, and paths to naturalized citizenship. Content and case examples will explore social work practice issues such as cultural competence, and a strength-based approach to dealing with immigrant clients and families.

### Workshop Objectives

- To understand the legal definitions of immigrants, refugees, and citizenship
- To recognize the social determinants of health, mental health and employment
- To identify immigrant family issues facing women, children, elderly and lesbian and gay communities
- To acquire strategies and skills working with immigrant populations
- To critically examine some of the current issues related to immigration
- To learn about institutions and resources at local, regional, and global levels

**Michael Cronin, PhD, LCSW** is an Assistant Professor of Social Work at Monmouth University in the School of Social Work and is the Coordinator for the International and Community Development Concentration. Dr. Cronin holds a PhD from Yeshiva University and a MS in Social Work from Columbia University. His research interests and publications are in international social work, health care and social policy, disaster management, social gerontology, and cultural competence.

Dr. Cronin serves as President of the Council of International Fellowship in the USA (CIF-USA) and has volunteered as a disaster mental health leader with the American Red Cross in Greater New York since 1996. He is the Main Representative to the United Nations in New York for the International Federation of Social Workers where he leads a team to raise global awareness about social issues, including aging, the family, health and mental health, social development, status of women, youth, migrants, and human rights.



# 12

## Working with Survivors of Domestic Violence

Friday, December 9

The Club at Magill Commons, Rooms 107 & 108

9am to 4pm

6 Clinical CEUs

\$98

Counseling survivors of domestic violence involves a range of challenges and opportunities including working with survivors to assess for risk, providing trauma-informed care while addressing practical concerns, and helping survivors learn which legal and community resources and supports are available to help them and their children move on to lives without abuse.

Social workers can play a crucial role in identifying families that are experiencing domestic violence and helping survivors and their children learn strategies to help protect themselves from violence. Social workers are also uniquely equipped to help survivors heal from the emotional legacies of abuse.

This workshop will provide a range of practical and therapeutic approaches to domestic violence and will include:

- How to help survivors create safety plans pre- and post-separation
- Creative strategies to reduce trauma symptoms and enhance coping skills
- Special considerations when using cognitive therapies
- Impact of domestic violence on children, visitation and custody
- Understanding the legal aspects of domestic violence
- How to collaborate with domestic violence agencies and other supportive community resources

**Janet Lee, MSW, LCSW** received her Masters of Social Work from Hunter College in New York City and has been a practitioner, supervisor and educator in the field of crisis response, domestic violence, sexual assault, child abuse and elder abuse for over 25 years. She has repeatedly been chosen to present at the New Jersey Association of Domestic Violence Professionals Annual Conference and has experience training child welfare staff, medical professionals, law enforcement and court personnel and mental health professionals. Currently, Janet works as a Supervisor of Domestic Violence Support Groups at 180 Turning Lives Around where she developed and leads second stage trauma recovery support groups for survivors of domestic violence. In addition, Janet is a Field Instructor for the state-wide 2nd FLOOR Youth Helpline and an Adjunct Professor in the School of Social Work at Monmouth University.



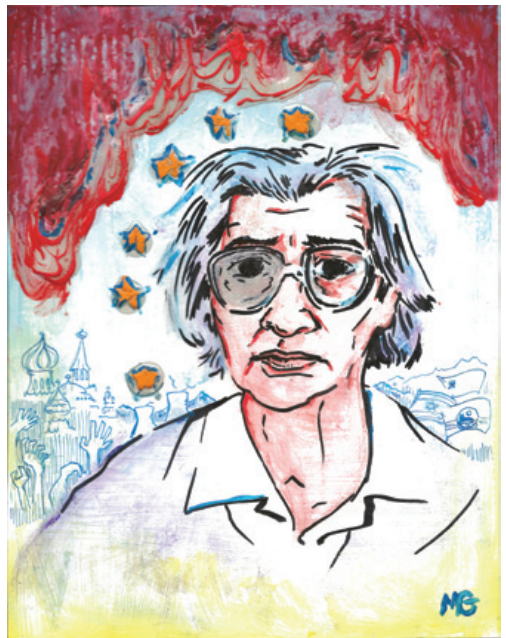
# 13

## Dialectical Behavior Therapy (DBT)

*6 Clinical CEUs*    *Tuesday, December 13*  
*\$98*                    *The Club at Magill Commons, Rooms 107 & 108*  
*9am to 4pm*

Dialectical Behavior Therapy is a treatment originally developed by Marsha Linehan, Ph.D. to treat people suffering from Borderline Personality disorder. The treatment utilizes a skills training component as well as individual treatment. It combines components of cognitive behavioral therapy with eastern philosophy and meditation practices. It also draws on psychodynamic, client centered, strategic and gestalt principles. This workshop will provide an overview to Dialectical Behavior Therapy including the populations served by this treatment and the specific application of this treatment to multi problem, adolescent population.

**Jamie Nappi, LCSW** has a Masters in Social Work from Fordham University and is a licensed practitioner in New Jersey. She has worked in several programs treating children, adolescents and their families since 1997. She has held clinical supervisory positions at a local care management organization and a local school district's school-based program. Jamie is currently in private practice treating children, adolescents and families as well as an Adjunct Professor at Monmouth University. She holds special interests in self-injuring populations as well as those meeting criteria for Borderline Personality Disorder.



*Right: Entire piece "Role Models: Yelena Bonner 1923-2011" by Megan Gale.*



## The PEP Experience

While visiting Monmouth University for your intellectual experience, be prepared to enjoy more than the education in our modern facilities boasting state of the art technology and spacious rooms. Our 155-acre campus entices you with manicured gardens, serene fountains as well as a park-like setting welcoming a relaxing day away from the office.

Full day workshops include a light breakfast and a selection of hot entrees for lunch. We cater to your senses with fresh salad bar selections, homemade soups, cold wraps and sandwiches, and hearty, hot entrees. Vegetarian and kosher varieties allow for no compromises.

**All workshops located on the Monmouth University campus:**

400 Cedar Avenue  
West Long Branch, NJ 07764

A complete campus map and directions to the University are available at:  
**[www.monmouth.edu](http://www.monmouth.edu)**

**\*\*Are you a new alumni and a member of the MU Social Work Alumni Society?  
Receive 50% off first 6 CEU PEP workshop after graduating. (\$98 value for \$49)  
E-mail [swalumni@monmouth.edu](mailto:swalumni@monmouth.edu) to become a member.**

We look forward to meeting you!



Online registration is available at [www.monmouth.edu/socialwork](http://www.monmouth.edu/socialwork)

Use one form per person. Duplicate this form for extra registration purposes. All questions may be directed to [swdept@monmouth.edu](mailto:swdept@monmouth.edu). Telephone: 732-571-3543. Fax: 732-263-5217.

**Registration must include either a full payment or company voucher prior to the workshop. Include registrant's name and workshop with all vouchers.**

Please enroll me in the following workshops:

<input type="checkbox"/>	1. Adopting: Sound Choices = Strong Families	October 14	\$109
<input type="checkbox"/>	2. Anti-Bullying Bill of Rights Legislation: A Workshop for ...	October 18	\$98
<input type="checkbox"/>	3. What EVERYONE Needs to Know about Budgets	October 21	\$98
<input type="checkbox"/>	4. Preventing School Violence	October 28	\$98
<input type="checkbox"/>	5. Action Methods Workshop I	November 1	\$98
<input type="checkbox"/>	6. Improving Communication When Working With Families	November 4	\$98
<input type="checkbox"/>	7. Just One More Bet ...	November 11	\$98
<input type="checkbox"/>	8. Action Methods Workshop II	November 15	\$98
<input type="checkbox"/>	9. Erotic Intelligence	November 18	\$98
<input type="checkbox"/>	10. Energy Psychology	November 29	\$98
<input type="checkbox"/>	11. Social Work and Migration: Working with Immigrants ...	December 5	\$98
<input type="checkbox"/>	12. Working with Survivors of Domestic Violence	December 9	\$98
<input type="checkbox"/>	13. Dialectical Behavior Therapy (DBT)	December 13	\$98

Personal/Agency Check    MasterCard    Visa    American Express    Agency Voucher (enclosed)

Make checks payable to Monmouth University.

\_\_\_\_\_  
Name (as it appears on credit card)

\_\_\_\_\_  
Credit Card Number

\_\_\_\_\_  
Expiration Date

\_\_\_\_\_  
Signature of Cardholder

Please provide us with the following information. Please print legibly.

Name: \_\_\_\_\_ License #: \_\_\_\_\_

Address: \_\_\_\_\_

City: \_\_\_\_\_ State: \_\_\_\_\_ Zip: \_\_\_\_\_

Telephone: \_\_\_\_\_ E-mail: \_\_\_\_\_

Check here for kosher food.    Check here for Alumni Society discount on program.\*\*

Send registration form with voucher, check or credit card information in a stamped envelope to:

Monmouth University  
The School of Social Work  
Professional Education Program  
West Long Branch, NJ 07764-1898

**No refunds will be issued. Credit for another workshop will be given if request is in writing and is received two weeks prior to original workshop. Credit expires one year from date of issuance.**

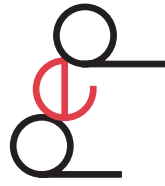
Certifications will be issued at the end of the workshop to those in attendance with all fees paid.

**If you require any accommodations as a result of a disability, please call us at 732-571-3543.**

**MONMOUTH  
UNIVERSITY**

WHERE LEADERS LOOK *forward*

Professional Education Program  
The School of Social Work  
400 Cedar Avenue  
West Long Branch, NJ 07764-1898



**Professional Education Program**  
Continuing Education for Social Workers  
The School of Social Work at Monmouth University

Workshops for Fall 2011