

Earned Excellence



**The Best Business Schools
in the World**

Monmouth University
School of Business Administration
400 Cedar Avenue
West Long Branch, NJ 07764
<http://www.monmouth.edu/academics/business.asp>
where leaders look forwardSM

**MONMOUTH
UNIVERSITY**

SCHOOL OF BUSINESS ADMINISTRATION

**EXPERIENTIAL
EDUCATION**

where leaders look forwardSM



Introduction



The Monmouth University School of Business Administration, in cooperation with its Business Council, offers you the opportunity to learn from experienced **mentors** from various business backgrounds. You also have the opportunity to experience challenging real-world involvement in your area of study in **experiential education** [internship (credit, no pay), cooperative learning experience (credit, with pay) and non-credit service learning]. Working with an experienced **mentor** and/or participating in **experiential education** can be helpful to you as you seek a rewarding and satisfying job and career.

EXPERIENTIAL EDUCATION REQUIREMENTS

The following policies govern **experiential education** at the Monmouth University School of Business Administration:

- Most students in good academic standing may participate in **experiential education** beginning the second semester of the sophomore year.
- The student works under the advisement of a faculty member who monitors experiential education, evaluates the presentation by the student and assigns the **experiential education** grade, taking into account the employer's evaluation of the student and the approval of the **experiential education** supervisor.
- Participation in **experiential education** requires the prior approval of the Career Advisor and Planner (CAP), department chairperson, Dean's office and the Faculty Director of Experiential Education.
- **Experiential education** may be paid or unpaid work experiences.
- Retroactive credit will not be granted for **experiential education**.

For questions on any of this information, and any other opportunities, please contact Assistant Dean Noah Hart by calling 732-263-5421 or emailing him at nhart@monmouth.edu

Why Service Learning?

Service Learning is similar to co-ops and internships in that students interact with an external constituency, but the focus is specifically around public or community service, placing an emphasis on civic responsibility and social change. A major element of the student's academic work involves reflection and reporting of their experiences.

Career Services

Career Services offered by the LCAC are extensive. The Career Services wing of the LCAC houses a career library and graduate school information for students use. Individual career counseling and group career workshops are provided here and through referrals to faculty advisors.

Placement

The mission of the Placement Office is to help students find jobs both before and after graduation. The office helps students develop the skills necessary to pursue career opportunities competitively and successfully. Annual programs include several job fairs, and an Accounting Honors Employment Program. Workshops and seminars hosted by Placement staff, as well as, outside speakers are held regularly. The majority of the hundreds of individual appointments scheduled yearly focus on resume preparation, interview coaching, and general advice about job search planning and strategies.

HOW YOU WILL BENEFIT



- Apply classroom learning and acquire new knowledge about a particular field.
- Develop a competitive edge in the job market by gaining practical experience.
- Have a substantial experience in your major leading to a possible career choice in your major.
- Meet professionals who can help with your job search.
- Meet professionals who can help with career planning and progress.
- Develop confidence by tackling professional assignments.

IMPORTANT QUESTIONS TO ASK YOURSELF



Who?

- What organizations and individuals are involved in the type of work that interests me?
- Have you checked out your local resources?



- a. Life and Career Advising Center (LCAC)?
- b. Mentor(s)
- c. Course faculty
- d. Faculty advisor(s)
- e. Library
- f. Family, friends and alumnae
- g. Yellow pages
- h. Internet
- i. Chamber of Commerce
- j. Classified ads



What?

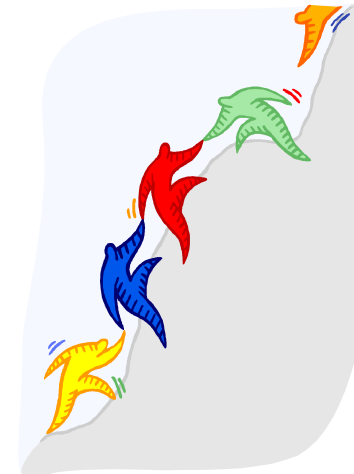
- What types of experiences interest you?
- What job or career related activities would you like to experience?
- What skills would you like to develop?
- What types of tasks and work settings do you enjoy?

Where?

- What geographic locations work for you?
- Do you need to be close to home?
- Would you be willing to work in another city?
- Would you be willing to work in another country?

Why work with a Mentor?

School of Business Administration Business Council **mentors** are senior executives, entrepreneurs and retired business persons. They have professional experience and insight which can be helpful to you as you pursue a job or career.



Why Intern?

Classroom instruction is the starting point in your business career. Business is an applied, practical profession. The best way to learn about a job or career in business is to do it in a real-world work environment. Experiential education will help you gain this real-world work experience.