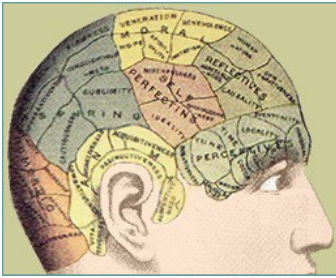


# NEWS & NOTES

OFFICIAL NEWSLETTER OF THE  
DEPARTMENT OF PSYCHOLOGY

Editors: Dr. Michele Van Volkom & Dr. Natalie Ciarocco

Volume 4, Issue 2  
Spring 2009



## STUDENT RECEIVES A RESEARCH GRANT

Senior Psychology major Jessica Stephan received a \$900.00 Psi Chi grant to study relationship initiation, under the supervision of Dr. Gary Lewandowski.

The title of Jessica's project was *Call Me: The Influence of Ego Depletion on Relationship Initiation*. The grant was utilized to give monetary compensation to the

study's participants. Jessica hoped to learn more about people's interactions and how they get involved in a new relationship.

This multi-faceted study included a depletion task, where one group of participants experienced depletion by exposure to a nearly illegible copy from a textbook, while the other group was exposed to a clear pho-

tocopy. Jessica was able to relate the study to many existing theories and concepts in psychology, including self-expansion, dissonance, and learning.

Beginning in the fall of 2009, Jessica will begin the School Psychology program at Georgian Court University.



### Inside this Issue

Undergraduate Research Conference 2

News from Psychology Club 3

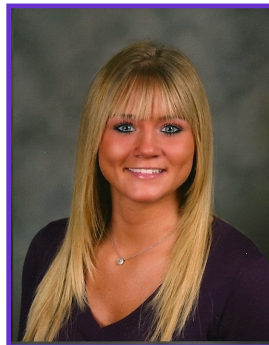
Psi Chi Update 3

Class of 2009 4

Psychology Awards 4

Faculty Happenings 5

## PSYCHOLOGY MAJOR RECEIVES DEAN'S AWARD OF EXCELLENCE



Shannon Connell

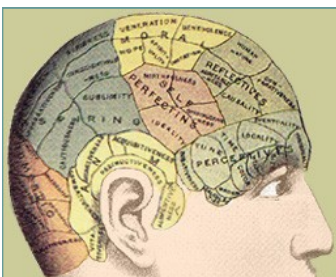
Senior Psychology major Shannon Connell was the recipient of this year's Dean's Award of Excellence.

She was nominated with the support of one hundred percent of the faculty members in the Psychology Department. This well-deserved award comes at the end of an extraordinary undergraduate journey for Shannon.

Shannon has served the university in many roles, including as a peer advisor for First Year Seminar and as the president of Psi Chi,

the National Honor Society in Psychology. She has also worked diligently as a research assistant with Dr. Lisa Dinella, and is the co-author of several conference presentations and upcoming publications.

Beginning in the fall of 2009, Shannon will begin the Psy.D. program at Chestnut Hill College in Philadelphia.



## PSYCHOLOGY DEPARTMENT CELEBRATES TWENTY-FIVE YEARS OF UNDERGRADUATE RESEARCH IN PSYCHOLOGY

On May 2, 2009, the Psychology Department hosted the 50<sup>th</sup> Semi-Annual Research Conference in Wilson Hall. After welcomes from Dean Green, Dr. Stapley, and Psi Chi President Barbara Fulmer, students were able to showcase their research projects. The day consisted of both paper and poster presentations, where students presented the results of their original thesis projects. Another part of the conference included an Applied Psychology poster session, where students taking PY 410 (Field Experience) with Dr. Hiatt shared their posters with the audience.

Thomas Bingham was the recipient of the best paper presentation award, while Stephanie Sullivan was the recipient of the best poster presentation award. A new award was given this year, the Alcatel-Lucent Foundation Applied Psychology Poster award. Christina Grimaldi was the recipient of this award at the conference.

Since it was such a special anniversary year for the department, a guest speaker, Dr. Paul Amato, visited from Pennsylvania State University to share his work on *Emerging Trends in the Study of Children and Divorce*. Audi-

ence members were exposed to new research focusing on the impact of nonresidential fathers and the relationship between parents and children post-divorce.

In addition to the keynote address by Dr. Amato, two special awards were given out this semester. Dr. Alan Cavaiola (Monmouth College class of 1973), a current member of Monmouth University's Psychological Counseling Department, received the Distinguished Alumni Award for his outstanding contributions to the understanding and treatment of substance abuse. Dr. Jack Demarest received the department Visionary Award for his role in conceptualizing the Psychology Department's current Research Sequence, which culminates in the opportunity for students to collaborate with a faculty mentor, resulting in an original thesis project.

On a final note, we were also fortunate enough to welcome back alumni from the past 25 years of Monmouth's Psychology program.

This semester the conference was organized by Dr. Natalie Ciarocco and Dr. Janice Stapley.



Award winner Thomas Bingham



Award winner Stephanie Sullivan



Award winner Christina Grimaldi

## NEWS FROM PSYCHOLOGY CLUB

By: Cassandra Serrano, Psychology Club Vice President

The Monmouth University Psychology Club was busy this spring. During the semester, the club hosted a meeting with CAP Dr. Natalie Ciarocco about ways to fulfill Experiential Education requirements. Students currently participating in psychology internships spoke about their experiences with club members. The club also hosted a meeting about academic scheduling with DAC Dr. Gary Lewandowski. He shared changes to the cur-

riculum and made recommendations about elective courses. The last meeting of the year was social in nature ending with an Easter Egg hunt for students.

Along with meetings, the Psychology Club participated in and organized several community service events. The semester started with a booth at the annual MLK event. In April, the club held an Easter party at Manna House (a home for victims of domestic violence). The students organized dinner for the families and an Easter Egg hunt for the children.

To end the year, the club members fundraised by selling candy from Old Monmouth Chocolates and elected new officers for next year. In what has become an annual event, the Psychology Club hosted a party before graduation for the faculty, friends, and families of graduating seniors.



Psi Chi members & faculty making dinner at the Ronald McDonald House



Psychology Club students hiding Easter eggs at the Manna House



Psi Chi Members at the 2009 Induction

## PSI CHI UPDATE

On March 29<sup>th</sup> the Monmouth University chapter of Psi Chi welcomed 23 new members at their annual induction ceremony. Psi Chi is the National Honor Society in Psychology, founded in 1929 for the purposes of encouraging, stimulating, and maintaining excellence in scholarship, and advancing the science of psychology. The ceremony featured all

the work and accomplishments of Psi Chi students thus far.

The group jumped into action by hosting two "meal making" events at the Long Branch Ronald McDonald House in April. Student members, alongside faculty, came together to make and serve dinner to those staying in the house.

## CONGRATULATIONS CLASS OF 2009!



The department of psychology is proud of the psychology majors in the class of 2009. While our students will undoubtedly go on to do a number of great things, the following is a preliminary list of students who have decided to continue their education in the fall.

Aubrey Clark	Master's, Social Work, Monmouth University
Shannon Connell	Psy.D., Clinical Psychology, Chestnut Hill
Lauren Damiano	Master's, Educational Counseling, Monmouth University
Arci Guzman	Albert Einstein School of Medicine of Yeshiva University
Shawna Kelly	Master's, Clinical Psychology, West Chester University
Michelle Maiorano	Master's, School Psychology, Rowan University
Natalie Menendez	Master's, Corporate Communication with specialization in Human Resource Management, Monmouth University
Rozan Mizrahi	Master's, Social Work, Hunter College
Jessica Stephan	Master's, School Psychology, Georgian Court University
Krista St. Louis	Ph. D., Human Services Psychology with a concentration in Community and Applied Social Psychology; University of Maryland Baltimore County
Katherine Wood	Master's, Professional Counseling, Monmouth University

### PSYCHOLOGY DEPARTMENT STUDENT AWARDS

This spring four students were selected for various department awards. Congratulations to all!

**Megan Inglesby** was bestowed the *Randeberg Memorial Award* for her outstanding all around performance as a Psychology major, exemplifying the ideals of service and involvement in psychology. The award reflects excellence in academic work, commitment to scientific research and discovery, and the demonstration of leadership and social responsibility.

**Jennifer McClosky** received the *Griffin Award* for the highest grade point average as a graduating psychology student.

**Krista St. Louis** was honored with the *Rose Feinberg Memorial Award* for being a deserving student in psychology. This award was donated by Harold Feinberg, and by family and friends of the late Mrs. Rose Feinberg, a graduate and faculty member of Monmouth University.

**Katherine Wood** was bestowed the *Alice Gustav Scholarship Award* for outstanding performance as a returning psychology major who exemplifies the ideals of compassion, hard work, independence, striving towards excellence, and a commitment to the feminist tradition.



## FACULTY HAPPENINGS

### ~Natalie Ciarocco, Ph.D.

Ciarocco, N., Strohmetz, D. B., & Lewandowski, G. W., Jr. (March 2009). *Exemplar Studies for Teaching Research Methodology*. Instructional Resource Award from the Society for the Teaching of Psychology (Award Amount: 1,500.00).

### ~Lisa Dinella, Ph.D.

#### Books:

Dinella, L. M. (Ed.) (2009). *Conducting Science-Based Psychology Research in Schools*. Washington, D. C.: APA Books.

#### Conference Presentations:

Dinella, L. M., Connell, S.\*, Weisgram, E., & Fulcher, M. (April 2009). *Gender differences and the role of parental occupational characteristics in understanding young adults' career aspirations*. Poster presented at the biennial meeting of the Society for Research in Child Development.

#### Course Creation:

*PY 103 HYBRID: Introduction to Psychology*  
Created and implemented 4 sections of a technologically enhanced Introduction to Psychology course. Students used online tutorials, quizzes, exams, discussion boards, and wiki sites to learn, synthesize, and apply relevant course material.

#### Community Outreach Talks, Presentations, and Projects:

Invited Guest Speaker for St. Peter's Preparatory High School in Jersey City, New Jersey. Facilitated workshops on the topic of gender equity in schools (October, 2008).

Coordinated community service project for Psi

Chi, International Honor Society Students of Monmouth University, and the Psychology Department Faculty. Together, students and faculty made dinner for families at the Ronald McDonald House on two separate nights in April 2009.

Presented "Creating Research Partnerships with school stakeholders: A relationship centered approach" for the Gender Research Center Faculty Forum Brown Bag in April 2009.

### ~Robyn Holmes, Ph.D.

#### Publications:

Holmes, R. McNeil, M. Adorna, P., & Procacino, J. (2008). Collegiate student athletes' perceptions and preferences regarding peer leadership. *Journal of Sport Behavior*, 31, 338-351.

#### Book Translation:

Dr. Holmes had her book titled, *Fieldwork with Children* translated into complex Chinese.

#### Conference Presentations:

Holmes, R. (2009, January). Chair. "Do you like Doritos?" *Preschoolers' table talk during mealtime*. Paper presented at the 7th annual Hawaii International Conference on Arts and Humanities, Oahu, Hawaii.

Holmes, R. (2009, April). *Cheating and emotional response in preschool and kindergarten children*. Poster presented at the World Psychiatric Association International Congress, Florence, Italy.

### ~Gary Lewandowski, Ph.D.

#### Grants:

Stephan, J.\*, & Lewandowski, G. W., Jr.\*\* (January 2009-Present). *Call me: The influ-*

*ence of ego depletion on relationship initiation.*  
Psi Chi: Undergraduate Research Grant.  
(Award Amount: 900.00).

### Publications:

Sizemore, O. J., & Lewandowski, G. W., Jr.  
(2009). Learning may not equal liking: How a  
course in research and statistics changes knowl-  
edge but not attitudes. *Teaching of Psychology*,  
36(2), 90-95.

### Conference Presentations:

Karafantis, D. M., Pierre-Louis, J., &  
Lewandowski, G. W., Jr. (2009, March). *Du-  
eling lay theories: The effect of the multicul-  
tural and colorblind theories on the social atti-  
tudes of college students.* Poster presented at  
the 80th annual Eastern Psychological Associa-  
tion Conference, Pittsburgh, PA.

Lewandowski, G. W., Jr., Cahill, K. A.\*, Vander-  
Drift, L. E., & Agnew, C. R. (2009, February).  
*On the path to infidelity: Self-expansion and  
increased attention to alternatives.* Poster pre-  
sented at the 2009 Society for Personality and  
Social Psychology Conference in Tampa, FL.

Le, B., Lewandowski, G. W., Jr., Mattingly, B.,  
Korn, M. S., & Evans, K.\* (2009, February).  
*Self-expansion and closeness in predicting infi-  
delity in romantic relationships* Poster pre-  
sented at the 2009 Society for Personality and  
Social Psychology Conference in Tampa, FL.

### Invited Talks:

Lewandowski, G. W., Jr. (2009, February). *Foster-  
ing faculty-student collaborations: The Close Re-  
lationship Research Lab.* Presentation given to the  
Board of Trustees, Monmouth University.

### Popular Press:

- Men's Health April 2009 issue
- Cosmopolitan February 2009 issue

### ~Judith Nye, Ph.D.

Forsyth, D. R., & Nye, J. L. (2008). Seeing and  
being a leader: The perceptual, cognitive, and  
interpersonal roots of conferred influence. In  
C. L. Hoyt, G. R. Goethals, and D. R. Forsyth  
(Eds.), *Leadership at the crossroads: Psy-  
chology and leadership.*(Vol. 1, pp. 116-131).  
Westport, CT: Praeger.

Nye, J. L., & Bellina, A. (2008, October). *Turn-  
ing the ship around: Making the change from  
fall to summer orientation and forging cross-  
divisional relationships in its wake.* Paper  
presented at the annual conference of the Na-  
tional Orientation Directors Association, Bos-  
ton, MA.

### ~Janice C. Stapley, Ph.D.

Stapley, J. C., & Noonan\*, J. (2009) *Music as a  
window into emotion regulation and college  
adjustment.* Poster presented at the Annual  
Meeting of the Eastern Psychological Asso-  
ciation, March, Pittsburgh, PA.

### ~Michele Van Volkom, Ph.D.

Van Volkom, M., Stapley, J. C. (Monmouth Uni-  
versity), Vaughn, H., & Coyle, C. (Bell Labs  
Research). (2009, March). *Age and gender  
differences in communication technology use.*  
Poster presented at the annual meeting of the  
Eastern Psychological Association, Pitts-  
burgh, PA.

\*Monmouth University Undergraduate Student

\*\* Faculty Supervisor